

Social & Community Infrastructure Audit

- Including Creche Audit

Proposed Large Scale Residential Development (LRD) at
Kildalkey Road, Trim, County Meath.

Contents

Introduction	3
Site Description and Context	4
Proposed Development	7
Policy Context	11
Social Infrastructure Overview	21
Childcare Audit.....	31
Proposed Childcare Facility.....	38
Conclusion.....	40
Appendix A – Responses to correspondence with Childcare Facilities.....	41
Appendix B – Correspondence Issued to Childcare Facilities by email.....	43
Appendix C – Correspondence issued to Local Schools by email	46
Appendix D – Correspondence received to Local Schools by email	50
Appendix E - Letter of Support from Childcare Provider (Cookies Early Learning Centre)	52
Appendix F – Correspondence Issued to Meath County Childcare Committee.....	53
Appendix G – Response received from Meath County Childcare Committee	55

Introduction

McGill Planning Limited, 9 Pembroke Street Upper, Dublin 2 is instructed by the applicant Loughglynn Developments Limited to prepare this Social & Community Infrastructure Audit.

This audit is prepared in response to the LRD Opinion issued from Meath County Council which requests a Community and Social Infrastructure Audit (including schools and childcare).

This audit assesses the Social & Community infrastructure in the vicinity of the application site at Kildalkey Road, Trim and includes a range of services that contribute to the quality of life of residents of the area. These form a key element for the fabric of the area in terms of the social, physical, and mental wellbeing of a community. This study includes a set of inventories that assess the availability and quality of services in relation to the education, community facilities, healthcare, and other services.

The services and facilities within a 10-minute walk of the site have been mapped, as well as a 10-minute cycle reflected in the 1km & 3km buffer zone. Some facilities such as education incorporate a wider buffer area of 5km.

Please note that any red line boundaries shown in this report are for illustrative purposes only. Please refer to the architect's drawings for an accurate red line boundary.

Site Description and Context

The subject site, measuring approximately 6.087 hectares gross (5.648 hectares net within the proposed red line boundary), is located in the townland of Crowpark (1st Division), Trim, Co. Meath, approximately 635m northwest of Trim town centre. It is bounded to the north by Kildalkey Road, to the east by the “Elder Grove” residential development, to the west by agricultural lands, and to the south by the River Boyne. The site occupies a transitional area between urban and rural character at the western fringe of Trim, with ground levels generally sloping from north to south, ranging from c. 65.4 m OD at Kildalkey Road to 56m at the south of the site.



Figure 1 Approx Site Location.

The site is primarily agricultural land with a mix of open fields and boundary hedgerows. Existing access is provided via an entrance off Kildalkey Road, which will serve as the main access for the proposed development. The site’s topography, boundaries, and proximity to the River Boyne inform the proposed layout, ensuring that residential development is appropriately set back from sensitive areas while integrating with the surrounding urban and rural context.

Trim is a historic town in County Meath, situated on the banks of the River Boyne. The town is located on the regional road R154, providing direct connections to the M3 motorway at Junction 5, which in turn links to the M50, Dublin’s orbital motorway. Trim is approximately 46 minutes from Dublin city centre and 43 minutes from Dublin Airport, offering convenient access to national and

international transport networks. The town has a rich heritage, including Trim Castle, and provides a mix of residential, commercial, and community facilities, making it an established and well-served location for new residential development.

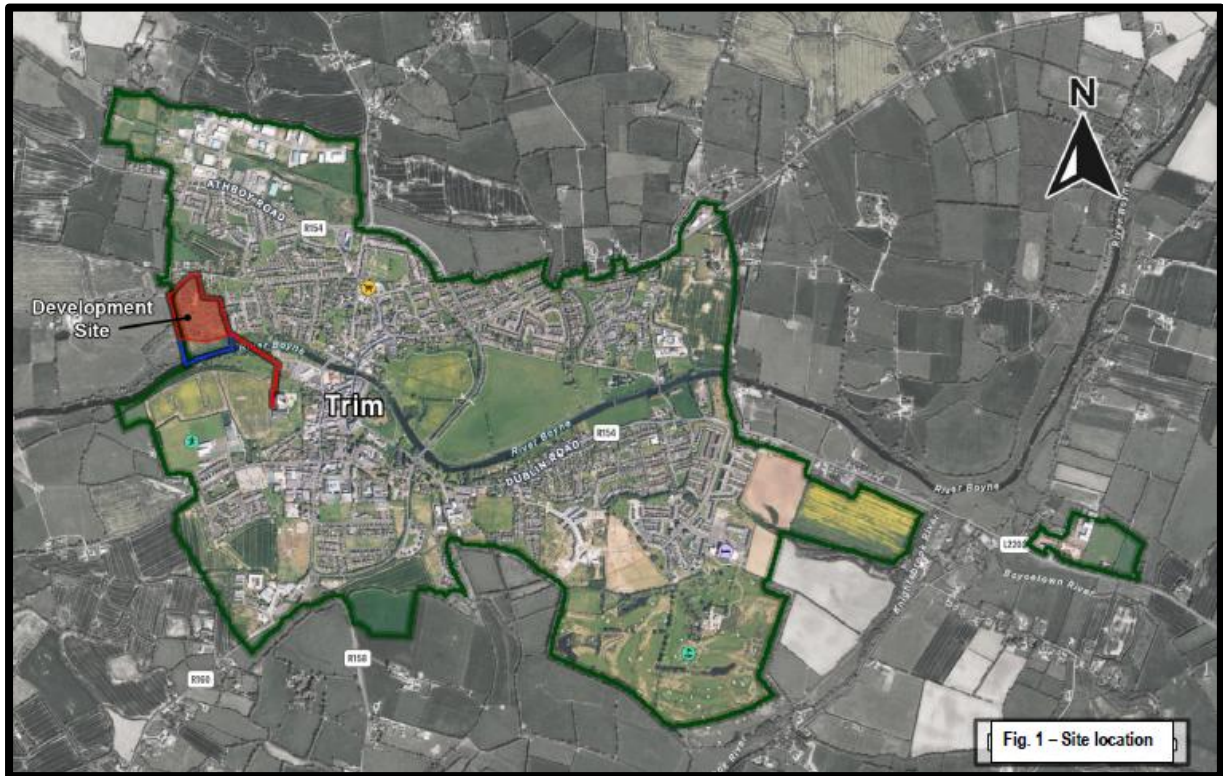


Figure 2: Site context. Source: O'Daly Architects

Transportation

Bus Routes, Road Networks & Public Transport

The closest bus stop near the area is Stop ID 11712, c. 1.2km away to the north east of the site. Bus route 111 operates between Cavan and Wilton Terrace (Dublin) via Granard and Trim with frequent services throughout the week. On weekdays, buses run every 60 minutes from 6:00 to 22:00 from Cavan, with extra services at 7:05 and 7:25, and every 60 minutes from Dublin between 8:20 and 00:10, with additional evening departures. On Saturdays, the service runs hourly in both directions from early morning until midnight.

Form of Transport	Destination	Distance from the Proposed Development	Peak Frequency
Bus routes	109B Dublin to Trim via Dunshaughlin	15 min walk	Every 2 hours (approx. 07:15–19:15 from Dublin; 06:00–18:00 from Trim), 7 days a week

	109D – DCU to Trim	15 min walk	Once daily each direction (weekdays only: 07:15 from Trim, 17:15 from DCU)
	111 Dublin to Athboy via Trim	12 min walk	Every hour (approx. 07:15–23:15 from Dublin), 7 days a week
	190 Trim to Drogheda via Navan and Slane	15 min walk	Every hour (approx. 05:30–23:30 from Drogheda), 7 days a week
	TFI Local Link 189 Navan to Enfield via Trim	15 min walk	Approx. every 2 hours (07:30–21:00 from Navan; 06:20–21:00 from Trim), 7 days a week
Train	Nearest rail connection: Enfield Train Station (Dublin–Sligo line, Longford-Dublin line), accessible via Local Link Route 189	15 min walk	Approx. every 1–2 hours (approx. 06:55–20:21 from Dublin), 7 days a week

Table 1: Bus and Train Route Destinations and Frequency

The next closest bus stop is located in Castle Street. Bus Stop 103151, c. 1.2km south east of the site and serviced by Bus Eireann, route 190 every 60 minutes. Walking times in the table above are approximate and are expected to shorten with the proposed walkway on the site connecting to Trim town.

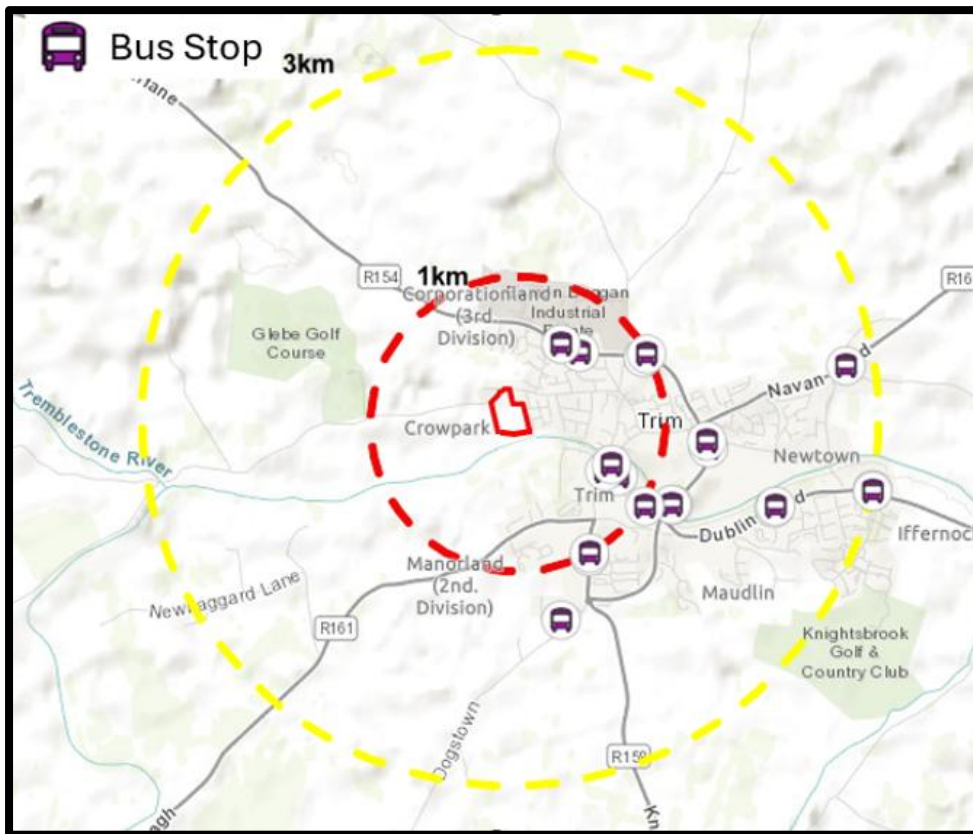


Figure 3: Bus stops within 1km and 3km buffer of the subject site

Proposed Development

Permission is sought for a Large-Scale Residential Development (LRD) on this site of approximately 6.087 hectares (gross) at lands located in the townland of “Crowpark 1st Division,” Trim, Co. Meath.

The main development site is bounded to the north by Kildalkey Road (L-4022), to the east by the Elder Grove residential estate, to the west by agricultural lands, and to the south by lands adjoining the River Boyne. To facilitate a foul sewer connection to the existing public network, the red line boundary extends south-east, passing beneath the River Boyne, and continuing underneath Trim Pitch and Putt Club lands, then south along Jonathan Swift Street, terminating directly adjacent the Office of Public Works offices on Jonathan Swift Street.

The proposed development will consist of 183 no. residential units (16 no. 1-bed, 40 no. 2-bed and 127 no. 3- and 4-bed units) and a creche. The residential mix will comprise 127 no. houses (19 no. detached 4-bed houses, 9 no. semi-detached/end-terrace 4-bed houses, 4 no. detached 3-bed houses, 43 no. semi-detached/end-terrace 3-bed houses and 52 no. mid-terrace 3-bed houses) and 56 no. apartments (16 no. 1-bed and 40 no. 2-bed units). The development will include 2 no. apartment blocks of up to 4 storeys in height. Houses will range from 2 to 2½ storeys in height and will comprise a mix of detached, semi-detached, end-terrace and mid-terrace dwellings. The creche will be a two-storey stand-alone building (c. 394 sq.m), with associated open space, car parking and a dedicated set-down area.

All residential units will be provided with private amenity space in the form of balconies or gardens. The development will also include public and communal open spaces. The proposed development will be served by a new single vehicular access road from Kildalkey Road as well as additional pedestrian access points. Provision has been made for potential future pedestrian and cyclist-only connections via the residential estate to the east.

The development will include the provision of a pumped foul sewer connection to the existing foul sewer located on Jonathan Swift Street. The works will involve installation by Horizontal Directional Drilling (HDD) of a rising main beneath the River Boyne. The development will also include all associated site development works, including 348 no. car parking spaces and 147 no. cycle parking spaces; public, communal and private open spaces; landscaping; boundary treatments; waste management and cycle storage areas; a foul water pumping station; SuDS proposals; and all associated services and infrastructure, including connection to the Uisce Éireann network.

A Natura Impact Statement (NIS) has been prepared in respect of the proposed development.



Figure 4: Proposed Landscape Masterplan



Figure 5: Proposed CGI. Source: Ivan O'Daly Architects

Methodology

In order to assess the context of the subject site, a geospatial survey was undertaken to determine the current population demographics and levels of relevant services in the study area. The following datasets were used during the survey:

- 2016 CSO Statistics
- 2022 CSO Statistics
- 2026 Google Maps
- Meath County Council website
- Department of Education
- HSE Facilities
- Pobal
- Building Information Ireland

For the purposes of assessing the social and community infrastructure serving the proposed development, a primary catchment area extending 1km from the subject site (measured as a straight-line distance) has been identified. This reflects the facilities most readily accessible to future residents on a day-to-day basis. To provide a broader understanding of the services available within the wider area, a secondary catchment extending 3km from the site has also been assessed.

The selection of these catchment areas is informed by the principles of the Regional Spatial and Economic Strategy (RSES) 2019–2031, which promotes the concept of the ‘10-minute settlement’. This approach seeks to ensure that residents can access a range of essential services and community facilities within a short walking or cycling distance of their homes. The RSES emphasises the importance of integrating land use and transport planning and states that:

“Planning at the local level should prioritise walking, cycling and public transport by maximising the number of people living within walking and cycling distance of their neighbourhood or district centres, public transport services, and other services at the local level such as schools.” (RSES, 2019).

“Support the ‘10 minute’ settlement concept, whereby a range of community facilities and services are accessible in short walking and cycling timeframes from homes or accessible by high quality public transport to these services in larger settlements.” (RSES, 2019).

or the purposes of the population analysis, a local catchment area was defined comprising the Electoral Divisions (EDs) intersecting a 1km radius of the subject site, as illustrated in Figure 05. This area is referred to throughout the report as the Local Catchment Area. Electoral Divisions were selected as the basis for demographic analysis as, unlike Small Area boundaries, they have remained consistent across recent census periods, thereby facilitating reliable comparison of population trends over time.

A 1km catchment was adopted as it broadly corresponds to a 10–12 minute walking distance and is therefore consistent with the principles underpinning the ‘10-minute settlement’ concept promoted by the Regional Spatial and Economic Strategy (RSES).

The subject site is located within the Trim Urban Electoral Division, while the adjacent Trim Rural Electoral Division also falls within the 1km catchment area. Accordingly, both Electoral Divisions have

been included in the population analysis. The inclusion of both EDs provides a broader and more representative understanding of the demographic profile, population trends and community infrastructure serving the area surrounding the proposed development. Furthermore, the wider social and community infrastructure audit utilises both 1km and 3km catchments to assess the range of facilities and services available to future residents, ensuring that both local and wider settlement-level provision is captured within the assessment.

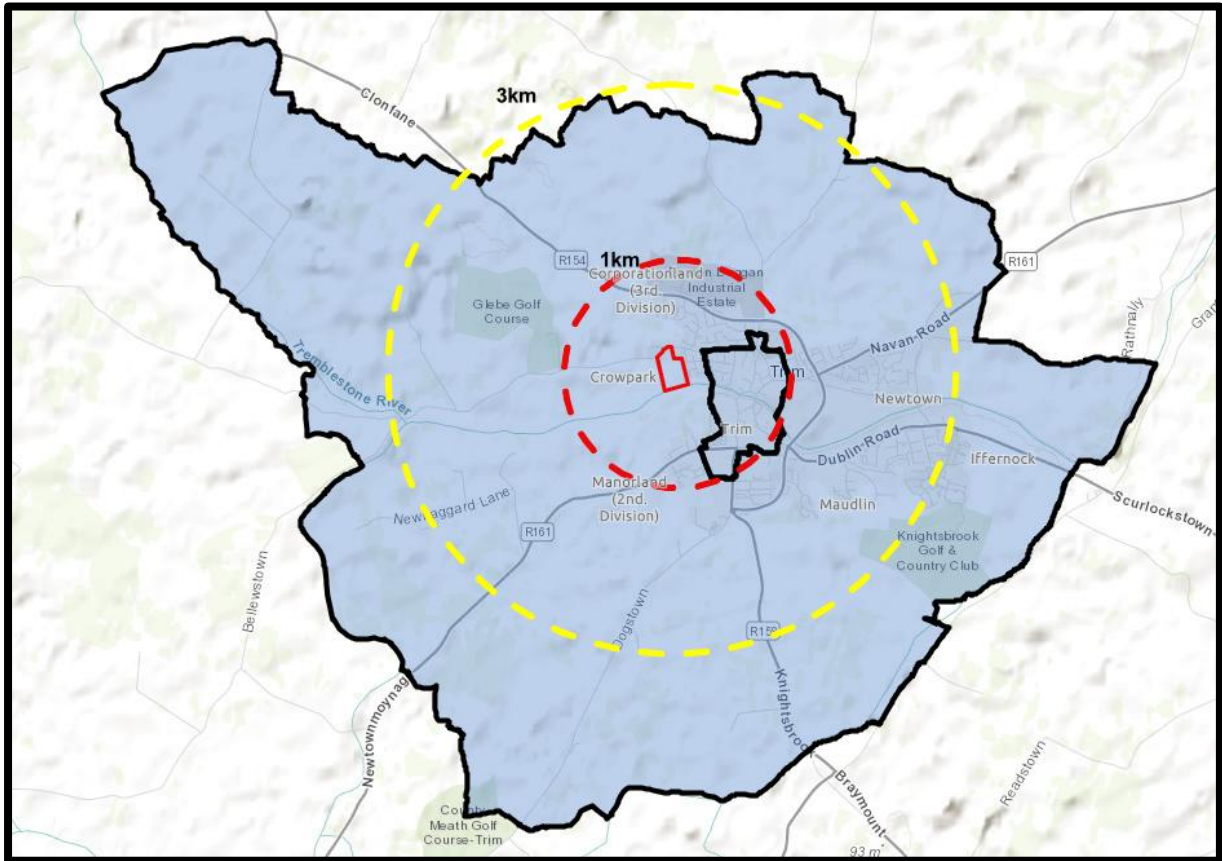


Figure 6: Electoral Divisions (EDs) within 1km and 3km of the subject site

Policy Context

National Planning Framework

The *National Planning Framework – Project Ireland 2040* ('NPF') sets a vision for the planning and development of Ireland to 2040 which is to be implemented through Regional, County and Local Plans. The NPF sets out 50% of future population are to be accommodated within the existing footprint of Dublin and the four other cities. The proposed development will contribute to this target.

A key focus of the NPF is on sustainable and compact development within pre-existing urban areas and the provision of accessible services and facilities for all communities. Chapter 6 of the NPF states that the “*ability to access services and amenities, such as education and healthcare, shops and parks, the leisure and social interactions available to us and the prospect of securing employment*” is intrinsic to providing a good quality of life for new and existing communities.

The NPF includes National Strategic Outcome 10 which seeks to provide access to quality childcare, education and health services. This requires an evidence-led planning approach. While there is no guidance on what infrastructure is required to service developments of different sizes, the NPF does provide a hierarchy of settlements and related infrastructure.

With the lack of alternative guidance and in order to provide a policy and evidence-based approach to the Assessment, within this Report we use the NPF hierarchy to assess the infrastructure but defer to catchment specification prescribed in Local Development Plan Policy.

First Revision to the National Planning Framework

The First Revision focuses on updates to the NPF to reflect significant and sustained population growth observed since the publication of the NPF in 2018 and updates to Government policy, amongst other factors. This section focuses on the main changes reflected in the First Revision which can be summarised as follows:

- National Population Growth Target increased from 5.8 million to 6.1 million by 2040. This represents an additional 300,000 people compared with the original NPF and would result in a total increase of 950,000 people over 2022 Census population figures. This projected increase in population is in line with the Economic and Social Research Institute's (ESRI) baseline population projections contained in their July 2024 outlook.
- Extension of policy directing 50% of national growth amongst Ireland's five cities of Dublin, Cork, Limerick, Galway and Waterford. Establishes new minimum growth targets for Ireland's five cities.
- Amends regional population growth targets with the Eastern and Midland Region (EMRA) increasing by approximately 470,000 additional people between 2022 and 2040 (c. 690,000 additional people over 2016-2040) i.e. a population of almost 3 million. Dublin City and Suburbs is expected to absorb a majority of this increase and is projected to grow by 295,000 people over the period.
- Reinforces compact urban form objectives of the 2018 NPF requiring 40% of all new housing to be built within existing urban footprints (50% in cities/30% elsewhere).
- Outlines a national requirement for 50,000 homes to be completed per year to satisfy demand. This is also in line with the ESRI projections; however, it is noted that this does not take account of existing structural pent-up demand nor a significant fall in household size (as outlined by the Housing Commission).

- Places greater emphasis on the accelerated delivery of transport orientated development (TOD) opportunities at greenfield and brownfield sites adjacent to major public transport hubs in the five cities, suburbs and metropolitan towns.

Taken together, the revised framework presents the same National Strategic Objectives with regards to social infrastructure and childcare, but places revised figures in relation to expected demographic demands and the requirements for significantly more residential units to be completed to meet demand.

Sustainable Residential Development and Compact Settlements Guidelines for Planning Authorities (2024)

The Sustainable Residential Development and Compact Settlements Guidelines for Planning Authorities provide national planning policy and guidance on sustainable residential development and the creation of compact settlements in both urban and rural areas in Ireland. The aim is to promote environmentally friendly practices, efficient land use, and community-focused development. The guidelines recognise the importance of compact growth in urban areas and the importance of walkable well-designed neighbourhoods that can meet day-to-day needs of residents within a short 10-to-15-minute walk of homes. These day-to-day needs refer to social infrastructure, including access to educational facilities and childcare, as essential to good quality of life, and state that new development should take into consideration the SI needs of the community and the existing provision of same. Under the chapter titled 'Sustainable and Compact Settlements', the process for the delivery of successful quality placemaking is reviewed and the provision of key community facilities such as amenities, schools, crèches and other community services are referenced as forming essential elements. In applying this methodology, the guidelines note it will be necessary to make an "informed estimate of net developable area taking account of factors such as the need for roads and parks, schools" and planning for same.

The Guidelines promote a move away from segregated land use areas (residential, commercial and employment) that have reinforced unsustainable travel in favour of mixed-use neighbourhoods. Ensuring that there are a good mix and distribution of activities around a hierarchy of centres has many benefits in terms of reducing the need to travel and creating active and vibrant places. It states that specific key principles (noted below) should be applied in the preparation of local plans and in the consideration of individual planning applications:

- a) "In city and town centres and at high-capacity public transport nodes and interchanges (defined in Table 3.8), development should consist of high intensity mix-use development (residential, commercial, retail, cultural and community uses) that responds in scale and intensity to the level of accessibility. At major transport interchanges, uses should be planned in accordance with the principles of Transport Orientated Development.*
- b) In city and town centres, planning authorities should plan for a diverse range of uses including retail, cultural and residential uses and for the adaption and re-use of the existing building stock (e.g. over the shop living). It is also important to plan for the activation of outdoor spaces and the public realm to promote more liveable city and town centres. Much of this can be achieved through the implementation of urban enhancement and traffic demand management measures that work together to free up space for active travel and create spaces that invite people to meet, mingle and dwell within centres.*
- c) In areas that are less central, the mix of uses should cater for local services and amenities focused around a hierarchy of local centres that support residential communities and with opportunities for suitable non-residential development throughout.*

- d) *In all urban areas, planning authorities should actively promote and support opportunities for intensification. This could include initiatives that support the more intensive use of existing buildings (including adaptation and extension) and under-used lands (including for example the repurposing of car parks at highly accessible urban locations that no longer require a high level of private car access).*
- e) *It will be important to align the integration of land uses and centres with public transport in order to maximise the benefits of public transport.*
- f) *The creation of sustainable communities also requires a diverse mix of housing and variety in residential densities across settlements. This will require a focus on the delivery of innovative housing types that can facilitate compact growth and provide greater housing choice that responds to the needs of single people, families, older people and people with disabilities, informed by a Housing Needs Demand Assessment (HNDA) where possible. Development plans may specify a mix for apartment and other housing developments, but this should be further to an evidence-based Housing Needs and Demand Assessment.”*

This audit has regard to these Guidelines which set out the distribution of uses and community infrastructure as being most relevant in the development of new residential areas. These criteria were considered in the development of the comprehensive infrastructure categories applied during the course of the study area audit.

Planning Design Standards for Apartments: Guidelines for Planning Authorities (2025)

Section 4.7 of the Guidelines state:

“Notwithstanding the Planning Guidelines for Childcare Facilities (2001), in respect of which a review is to be progressed, and which recommend the provision of one child-care facility (equivalent to a minimum of 20 child places) for every 75 dwelling units, the threshold for provision of any such facilities in apartment schemes should be established having regard to the scale and unit mix of the proposed development and the existing geographical distribution of childcare facilities and the emerging demographic profile of the area.

One-bedroom or studio type units should not generally be considered to contribute to a requirement for any childcare provision and subject to location, this may also apply in part or whole, to units with two or more bedrooms.”

The document specifies the provision of 1 No. childcare facility (equivalent to a minimum of 20 No. child places) for every 75 No. proposed residential units. The application of this standard is however informed by the demographic profile of the area and the existing capacity of childcare facilities.

In line with the above National Guidelines, any one-bedroom units within the proposed development would have been discounted in estimating the total number of minors (children aged 0–4 years) and school going children (5–18 years) expected to reside within the development. Instead, in the case of the proposed development, 125 No. units have been included. The estimation of children population and the likely demand for childcare services arising from them has been further detailed in the Audit in Section 4.0.

Action Plan for Education (Statement of Strategy 2023-2025)

The Department of Education has operated an *Action Planning Framework* to provide an overview of the activity associated with the strategic progress of the 2021-2023 strategy and priorities since 2021. The plan sets out key priorities on an annual basis, with the most recent Plan published in September 2023. This Plan translates the strategic priorities to actions and makes progress towards achieving the high-level goals for the Department and the sector. The high-level roadmap of how to achieve the Department's priorities over 2023–2025 are:

1. Enable the provision of high-quality education and improve the learning experience to meet the needs of all children and young people, in schools and early learning and care settings;
2. Ensure equity of opportunity in education and that all children and young people are supported to fulfil their potential;
3. Together with our partners, provide strategic leadership and support for the delivery of the right systems and infrastructure for the sector;
4. Organisational Excellence and Innovation

The *Action Plan for Education (Statement of Strategy 2023–2025)* provides useful insights into the requirements for new schooling infrastructure and the standards to ensure high-quality learning for all students.

The Provision of Schools and the Planning System: A Code of Practice (2008)

The Provision of Schools and the Planning System: A Code of Practice is part of a wider package of initiatives designed to facilitate the provision of schools and schools-related infrastructure within the planning system and in line with the principles of proper planning and sustainable development. The following core objectives aim to provide an effective integration of schools in relation to the planning system:

1. Schools provision should be an integral part of the evolution of compact sustainable urban development and the development of sustainable communities;
2. The provision of any new schools (both primary and post-primary) should be driven by and emerge from an integrated approach between the planning functions of Planning Authorities and the Department of Education; and,
3. Local Authorities, as Planning Authorities, will support and assist the Department in ensuring the timely provision of school sites.

The document provides guidance when assessing future development potential of certain areas and establishing demand for schools. This document states that in some cases it *“may be more complex as it involves not just an assessment of likely population growth but also an appraisal of the capacity of existing post-primary schools, coupled with an assessment of the enrolment patterns in existing and anticipated ‘feeder’ national schools.”*

The Code of Practice stipulates the methodology for forecasting future education demand. Identification of future primary school demands should be based upon:

- *“The anticipated increase in overall population for the city/county plan area over the next nine years (as set out in relevant development or local area plans);*
- *The current school-going population based on school returns;*
- *The increase in school going population, assuming that an average of 12% of the population are expected to present for primary education; and*

- *The number of classrooms required in total derived from the above.”*

The Report addresses reasonable estimates of future demand based on the influx of population arising from the proposed development in a manner that is consistent with national and regional estimates sourced by CSO results.

Childcare Facilities: Guidelines for Planning Authorities (2001)

Appendix 2 of the *Childcare Facilities: Guidelines for Planning Authorities (2001)* produced by the Department of Housing, Planning and Local Government state the following with respect to the provision of new communities/larger new housing developments (Paragraphs 2.4 and 3.3.1 also refer to this standard):

“Planning authorities should require the provision of at least one childcare facility for new housing areas unless there are significant reasons to the contrary for example, development consisting of single bed apartments or where there are adequate childcare facilities in adjoining developments. For new housing areas, an average of one childcare facility for each 75 dwellings would be appropriate [...]

The threshold for provision should be established having regard to the existing geographical distribution of childcare facilities and the emerging demographic profile of areas.”

This document establishes an indicative standard of 1 No. childcare facility per 75 No. dwellings in new housing areas, where the facility provides a minimum of 20 No. childcare places. However, the guidance acknowledges that other case-specific insights may lead to an increase or decrease in this requirement. Appendix 2 of the Guidelines states that the threshold and level of potential provision should be established having regard to the existing geographical distribution of childcare facilities and the emerging demographic profile of an area.

The results of any childcare needs analysis carried out as part of a County Childcare Strategy should also be considered.

Regional Planning Policy

Regional Spatial and Economic Strategy for the Eastern and Midland Region

The *Regional Spatial and Economic Strategy* (Eastern and Midland Regional Assembly) (*‘RSES’*) states that Social Infrastructure plays an important role in developing strong and inclusive communities. Section 9.1 of the *RSES* details that the availability of, and access to, services and facilities, inclusive of healthcare services, education facilities and community/recreational facilities is key to creating healthier places. The *RSES* includes the following Regional Policy Objectives which relate to access to Social Infrastructure and its overall improvement:

RPO 9.14 – *“Local authorities shall seek to support the planned provision of easily accessible social, community, cultural and recreational facilities and ensure that all communities have access to a range of facilities that meet the needs of the communities they serve.”*

RPO 9.18 – *“Support the implementation of local authority Local Economic and Community Plans, in collaboration with Local Community Development Committees (LCDCs) and through the use of*

spatial planning policies, to seek to reduce the number of people in or at risk of poverty and social exclusion in the Region.”

RPO 9.19 – *“EMRA shall work collaboratively with stakeholders including the wide range of service providers through the LECPs to effectively plan for social infrastructure needs.”*

Regarding childcare facilities and schools, the RSES states that Local Authorities should consider demographic trends and patterns when carrying out an assessment of the need for Social Infrastructure.

RPO 9.20 – *“Support investment in the sustainable development of the Region’s childcare services as an integral part of regional infrastructure to include:*

- *Support the Affordable Childcare Scheme.*
- *Quality and supply of sufficient childcare places.*
- *Support initiatives under a cross Government Early Years Strategy.*
- *Youth services that support and target disadvantaged young people and improve their employability.”*

RPO 9.27 – *“In areas where significant new housing is proposed, an assessment of need regarding schools provision should be carried out in collaboration with the Department of Education and Skills and the statutory plans shall designate new school sites at accessible, pedestrian, cycle and public transport friendly locations.”*

Section 9.7 highlights that SI should be easily accessible by walking, cycling and public transport. Shared use and co-location of facilities should be encouraged, in order to align service provision, use land more efficiently and facilitate opportunities for further inclusion and community participation.

The RSES has been consulted in this Social Infrastructure Audit to ensure the range of services, community facilities, and standards deemed to improve quality of life are considered.

Local Planning Policy

Meath County Development Plan 2021-2027

The Meath County Development Plan 2021–2027 recognises that the delivery of significant housing, alongside the provision of appropriate physical and social infrastructure, is essential to meet the needs of future residents.

Section 7.7.2 of the Development Plan highlights the purpose of a Social Infrastructure Assessment (SIA), which is to identify existing facilities located within a reasonable distance of a subject site. This process enables an evaluation of any potential gaps or deficiencies in provision, including those that may arise as a result of population growth generated by a proposed development.

This Community and Social Infrastructure Report has been prepared in accordance with the requirements of Section 7.7.2 of the Development Plan, with particular regard to Policy SOC POL 6, which states:

“To require that all new residential development applications of 50 units or more on zoned lands are accompanied by a Social Infrastructure Assessment (SIA) to determine if social and community facilities in the area are sufficient to provide for the needs of the future residents (of all age cohorts). This should

include details regarding the following essential facilities: Playgrounds, parks and other green spaces, education, childcare, health and others such as shops, banks, post offices, community meeting rooms/centres and recreational facilities. The assessment should identify membership and non-membership facilities which allow access for all groups. Where deficiencies are identified, proposals will be required to accompany the Planning application to address the deficiency. In certain cases however, residential development under these thresholds may, at the discretion of the Planning Authority, require the submission of a SIA”.

In addition to the above, other relevant sections within Chapter 7 (Social Infrastructure), specifically Section 7.7, include provisions relating to Healthcare Facilities, Existing Sport and Leisure Infrastructure, Open Space, and Arts and Cultural Facilities.

The following policies are also of particular relevance to community and social infrastructure:

Community Facilities

SOC POL 2 *“To support the provision and distribution of a range of community infrastructure facilities in accordance with the Settlement and Core Strategies to meet the needs of the County’s population in conjunction with other statutory, voluntary, private sector and community groups.”*

SOC POL 6 *“To require that all new residential development applications of 50 units or more on zoned lands are accompanied by a Social Infrastructure Assessment (SIA) to determine if social and community facilities in the area are sufficient to provide for the needs of the future residents (of all age cohorts). This should include details regarding the following essential facilities: Playgrounds, parks and other green spaces, education, childcare, health and others such as shops, banks, post offices, community meeting rooms/centres and recreational facilities. The assessment should identify membership and non-membership facilities which allow access for all groups. Where deficiencies are identified, proposals will be required to accompany the Planning application to address the deficiency. In certain cases however, residential development under these thresholds may, at the discretion of the Planning Authority, require the submission of a SIA.”*

Cultural Facilities

SOC POL 51 *“To continue to recognise the importance of the Arts in areas of personal development, community development, economic development and tourism and to endeavour to create opportunities in each of these areas.”*

SOC POL 53

“To support the development, provision and sustainability of arts and cultural infrastructure e.g. festivals at appropriate locations throughout on the success and support the clustering of the film and audio visual sector in the County and, where appropriate, in association with libraries.”

Recreational Facilities and Open Space

SOC POL 32 *“To encourage and support local sports, community groups and other groups in the provision and development of outdoor and indoor sporting and community facilities.”*

SOC POL 33 *“To support local sports groups, community groups and other groups in the development of facilities through the reservation of suitable land and the provision of funding where available and appropriate.”*

SOC POL 34 *“To cater for the sporting and recreational needs of all sectors and ages of the community and promote the integration of those with special needs into the sporting and recreational environment.”*

SOC POL 38 *“To promote the development of a wide variety of high quality accessible open space areas, for both active and passive use, and formal and informal activities in accordance with the Core Strategy and Settlement Strategy and the standards set out in Chapter 11 Development Management Standards and Land Use Zoning Objective taking into account any environmental sensitivities including likely significant effects on European Sites (SACs and SPAs).”*

Area Demographics

For the purposes of this population analysis, a local catchment area was defined comprising the Electoral Divisions (EDs) located within, or intersecting, a 1km radius of the subject site. This area is illustrated in Figure 06 and is referred to throughout this report as the Local Catchment Area. Electoral Divisions were selected as the basis for demographic analysis as, unlike Small Area boundaries, they have remained largely unchanged across recent census periods, thereby facilitating meaningful comparison of population trends over time.

A 1km catchment was adopted as it broadly corresponds to a 10–12 minute walking distance and is therefore consistent with the principles underpinning the ‘10-minute settlement’ concept promoted by the Regional Spatial and Economic Strategy (RSES).

The subject site is located within the Trim Urban Electoral Division, while the adjacent Trim Rural Electoral Division also falls within the 1km catchment area. Accordingly, both Electoral Divisions have been included within the Local Catchment Area for the purposes of this assessment. The inclusion of both EDs provides a broader and more representative understanding of the demographic characteristics, population trends and community context of the area surrounding the proposed development.

In addition to the demographic analysis, both 1km and 3km catchment areas have been utilised throughout this audit to assess the availability of social and community infrastructure serving the site.

The Local Catchment Area, comprising the Trim Urban and Trim Rural Electoral Divisions, is illustrated in Figure 07 below.

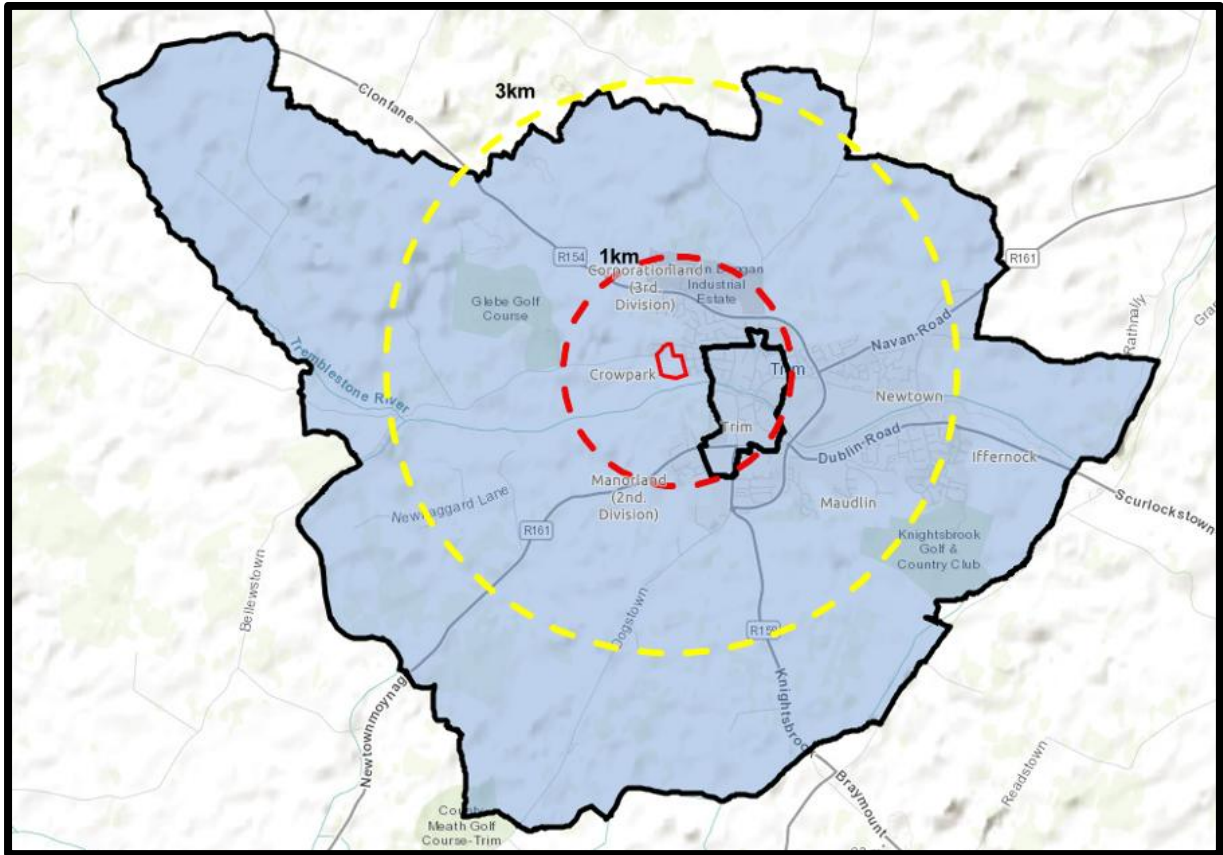


Figure 7: The Local Catchment Area, comprising the Trim Urban and Trim Rural Electoral Divisions

Area	2016 Population	2022 Population	Population Change 2016-2022	% Change 2016-2022
Local Catchment Area	10,179	10,584	405	3.98% increase
Meath	195,044	220,826	25,782	13.22% increase
Ireland	4,761,865	5,149,139	387,274	8.13% increase

Table 2: Population percentage change for Trim

Age	2016	2022	Change	Percentage Change
0-4 Pre-school	792	636	-156	-19.7%
5-14 Primary School	1520	1601	81	5.30%
15-19 Post Primary	669	712	43	6.40%

20-34 Adults	1789	1712	-77	-4.3%
35-64 Adults	4201	4439	238	5.70%
65+ Adults	1208	1483	275	22.80%

Table 3: Population breakdown for Trim 2016-2022

Between 2016 and 2022, the population of the Local Catchment Area increased from 10,179 persons to 10,584 persons, representing an increase of 405 persons or 3.98%. While positive, this growth rate was lower than that recorded across County Meath, which experienced population growth of 13.22%, and below the national growth rate of 8.13% over the same period.

An analysis of the age profile of the Local Catchment Area highlights a number of notable demographic trends. The pre-school population (0–4 years) decreased from 792 to 636 persons, representing a decline of 19.7%. In contrast, the primary school-age population (5–14 years) increased by 5.3%, while the post-primary age cohort (15–19 years) increased by 6.4%. Within the adult population, the 20–34 age group experienced a modest decline of 4.3%, whereas the 35–64 age cohort increased by 5.7%. The most significant change occurred within the population aged 65 years and over, which increased by 22.8%, reflecting an ageing demographic profile within the area.

Overall, the data indicates that the Local Catchment Area has experienced steady population growth between 2016 and 2022, accompanied by changing demographic characteristics. Although the number of pre-school children has declined since 2016, the area continues to accommodate a substantial child population, with 636 children aged 0–4 years and 1,601 children aged 5–14 years recorded in the 2022 Census. Children aged 0–14 years account for approximately 21% of the total population, while the 0–4 age cohort represents approximately 6.0% of residents.

These figures indicate that the area continues to support a significant family population and demonstrates an ongoing requirement for childcare, educational and community services. The presence of a sizeable pre-school cohort, together with continued growth in school-age populations, supports the provision of additional childcare infrastructure to meet the needs of existing and future residents.

Social Infrastructure Overview

This Social Infrastructure Audit assesses the range of services, facilities and amenities that contribute to the creation of sustainable communities and support a high quality of life for both existing and future residents. The audit examines key themes of social infrastructure, including education, childcare, healthcare, recreation, community facilities, open space, retail services and public transport.

The assessment has been undertaken with reference to both 1km and 3km catchment areas surrounding the subject site. These catchments have been selected to reflect the principles of the '10-minute settlement', whereby residents can access a broad range of daily services and facilities within convenient walking and cycling distances. The 1km catchment represents the facilities most readily accessible on foot, while the 3km catchment captures a wider range of services and amenities available within a short cycle or local public transport journey.

The facilities identified throughout this audit are categorised according to their location within either the 1km or 3km catchment areas, measured on an "as the crow flies" basis from the subject site. Due to the existing street network, topography and urban layout, actual walking and cycling distances may exceed the straight-line distances in some instances. Accordingly, the accompanying tables identify both the straight-line distance and the approximate walking and/or cycling distance to each facility, providing a more realistic assessment of accessibility for future residents.

Category	Description
Open Space	Parks, Pitches, Residential Green Areas, Playgrounds
Sport and Recreation	Sports Clubs, Stadiums, Racetracks, Swimming Pools, Gyms
Education	Primary Schools, Post-Primary Schools, Special Schools, Third Level Universities, Other Educational Facilities
Health Services	GPs, Pharmacies, Health Centres, Hospitals
Retail Services	Supermarkets, Convenience Shops, Speciality Services, Restaurants/Takeaways, Pubs
Emergency	Garda Station, Fire Station

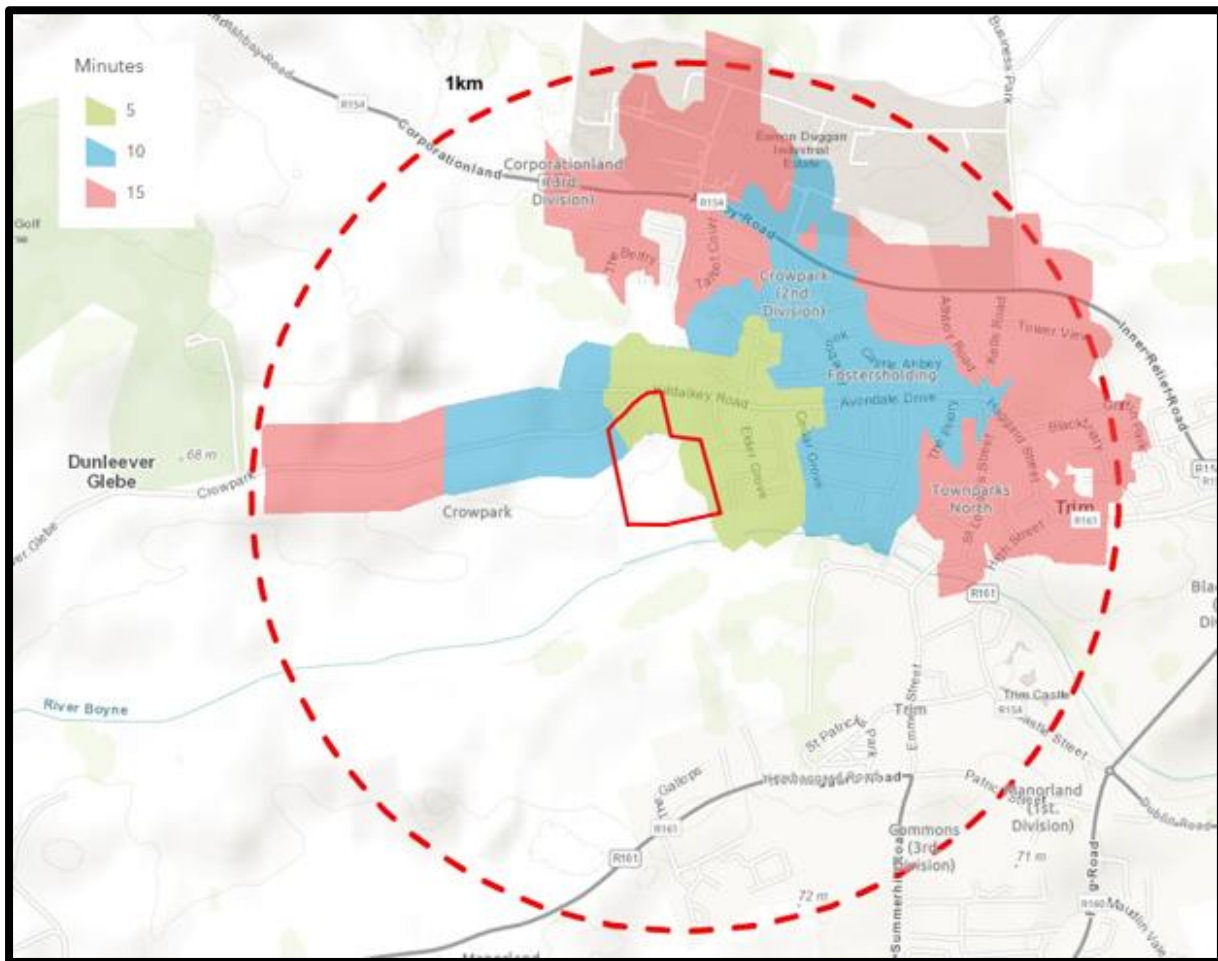


Figure 8: Walking Times from Subject Site, showing 5, 10 and 15 minute walking times

Education

Education and training are fundamental components of sustainable communities, contributing to social wellbeing, economic development and lifelong learning opportunities. The availability of accessible educational infrastructure is therefore an important consideration in assessing the capacity of an area to accommodate future population growth.

The subject site is well served by a range of primary and post-primary educational facilities within both the 1km and 3km catchment areas. The availability of a variety of school types, including mixed-gender, single-gender and Irish-medium education, provides a broad choice of educational options for existing and future residents.

Within approximately 3km of the site, there are five primary schools comprising St Patrick's National School, St Mary's Convent Primary School, St Michael's Boys National School, Trim Educate Together National School and Gaelscoil na Bóinne. Collectively, these schools accommodate over 1,200 pupils and demonstrate a substantial level of existing educational provision within the area.

At post-primary level, the area is served by Scoil Mhuire and Boyne Community School, both located within approximately 2km of the subject site. Together, these schools accommodate in excess of 1,800 students and provide significant capacity for second-level education within the town.

The presence of a range of primary and post-primary schools within convenient walking, cycling and public transport distance of the proposed development demonstrates that Trim is well equipped to serve the educational needs of existing and future residents. The distribution of schools throughout the town supports the principles of the 10-minute settlement and contributes positively to the sustainability of the proposed development.

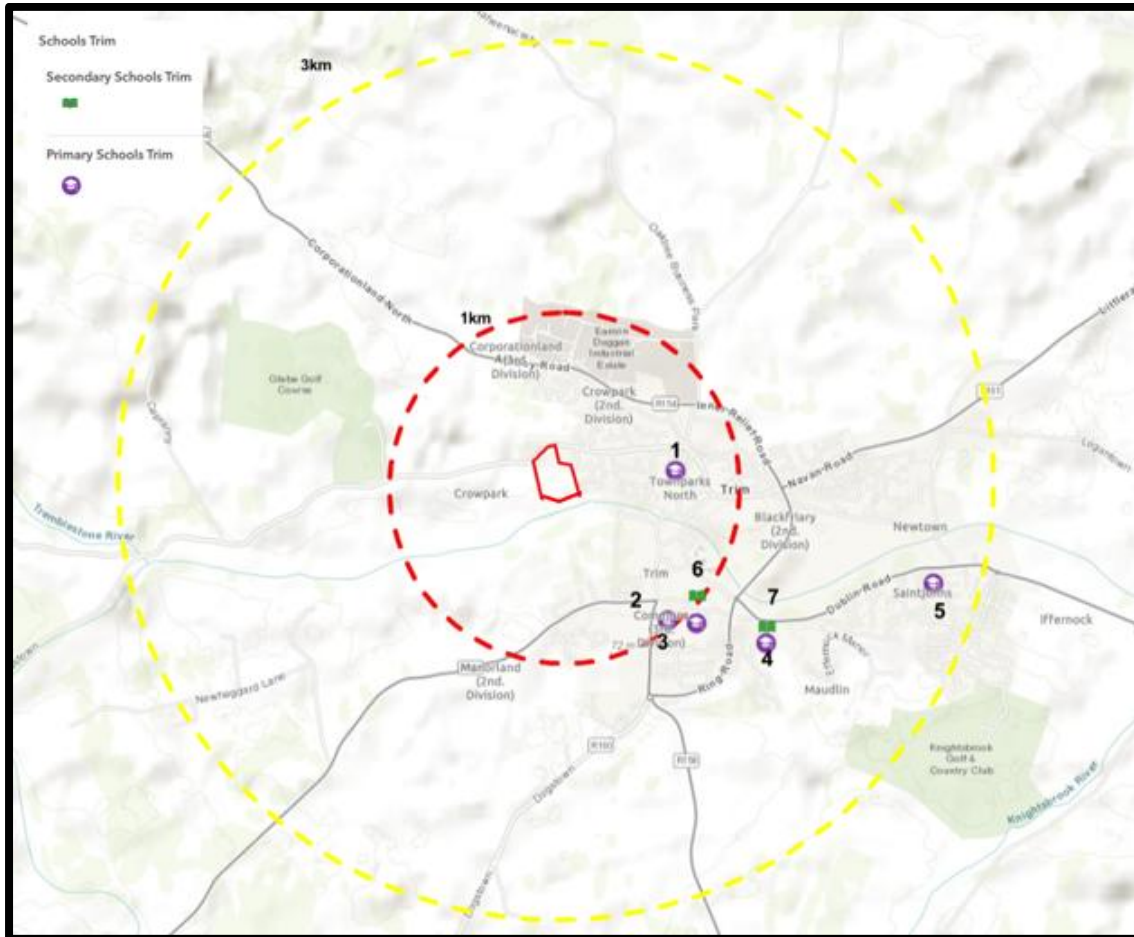


Figure 9: List of Primary and Post Primary Schools within 3km of the subject site

No. on map	Primary School	Distance	Enrolment (25/26)	
			Boys	Girls
1.	St Patricks National School	750 m	22	26
2.	St Mary's Convent Primary School	900m	160	361
3.	St Michaels Boys National School	1000 m	287	7
4.	Trim Educate Together National school	1600 m	87	87
5.	Gaelscoil Na Bóinne	2700 m	100	106

No. on map	Post Primary School	Distance	Enrolment (25/26)	
			Boys	Girls
6.	Scoil Mhuire	1000 m	-	814
7.	Boyne Community School	1600 m	770	238

Table 4: List of Primary and Post Primary Schools within 3km of the subject site

Health Services

The availability of accessible, high-quality health services is a key component in the creation of sustainable and resilient neighbourhoods. The subject site benefits from a strong concentration of healthcare facilities within the surrounding area, particularly within a 1km catchment, ensuring convenient access for existing and future residents.

Within approximately 1km of the subject site, there is a well-established network of pharmacies, general practitioner (GP) practices, and primary care services. In total, there are six pharmacies located within close proximity, including O’Shaughnessy’s Pharmacy, Adrian Dunne Pharmacy, Trim Pharmacy (McGreals), Farrell’s Pharmacy, McGrane’s Pharmacy, and Allcare Pharmacy. These facilities are primarily clustered along Market Street, Haggard Street and the wider town centre, providing a high level of accessibility to pharmaceutical services within walking distance.

Primary care provision is also well represented in the area, with three GP practices located within the 1km catchment, namely Trim General Practice, The Cullen General Practice, and Trim Group Practice. In addition, Trim Medical (Centric Health) operates from the Trim Primary Care Centre on Longwood Road, which functions as a key local health hub providing integrated primary healthcare services.

The concentration of healthcare facilities within the town centre and along key arterial routes ensures that a broad range of medical services is readily accessible to residents of the proposed development within a short walking distance. This level of provision supports the principles of the 10-minute settlement and contributes positively to the overall sustainability of the area.

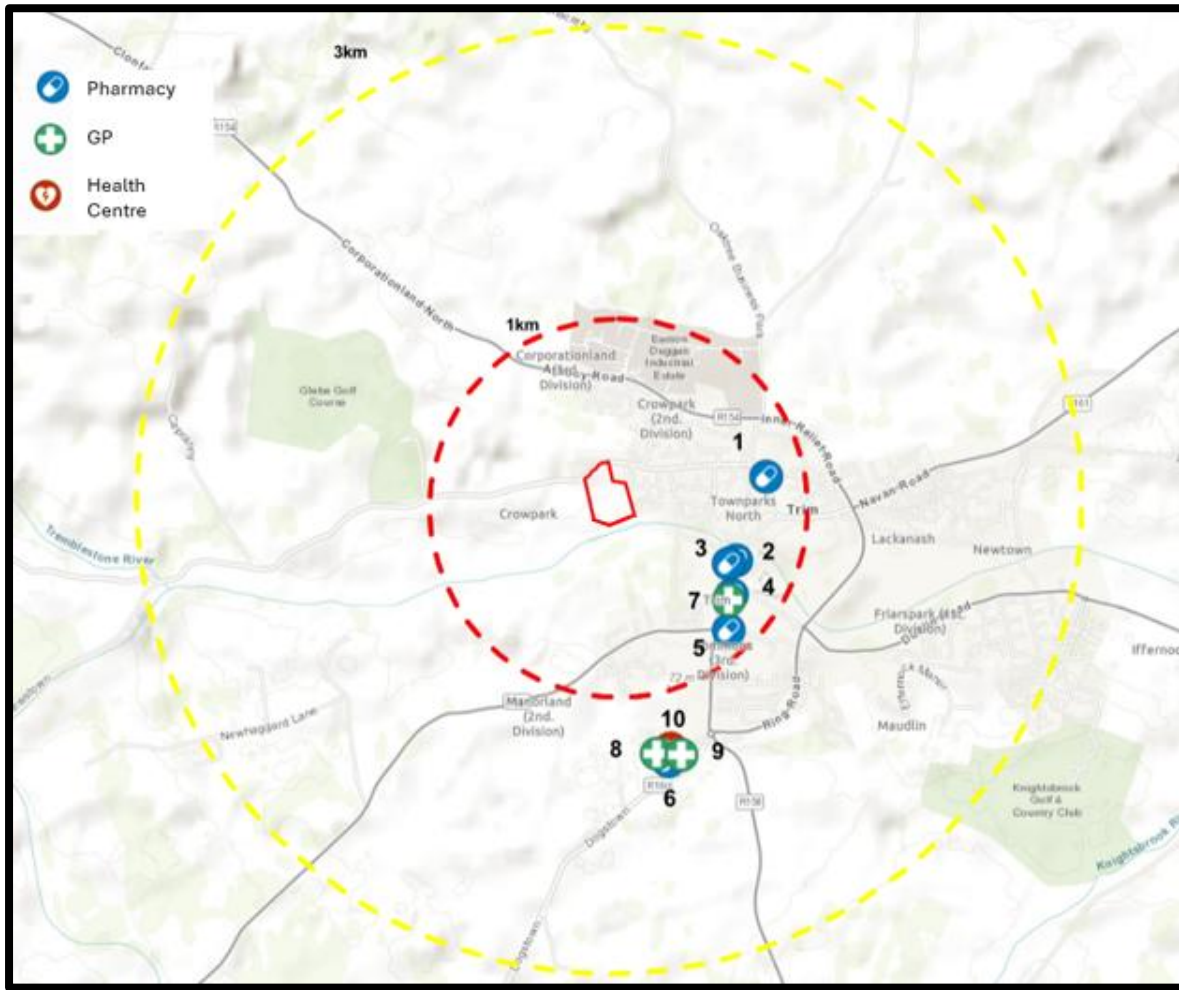


Figure 10: Heath Facilities within a 1km and 3km buffer radius from subject site

No. on Map	Existing Health Services within 1km of Subject Site	Location
Pharmacies		
1.	O'Shaughnessy's Pharmacy	Haggard St, Townparks North, Trim, Co. Meath
2.	Adrian Dunne Pharmacy Trim	Market St, Townparks South, Trim, Co. Meath, C15 FE03
3.	Trim Pharmacy (McGreals)	Market St, Townparks South, Trim, Co. Meath, C15 PY11
4.	Farrell's Pharmacy Trim	Finegans Way, Trim, Co. Meath
5.	McGrane's Pharmacy	1 Patrick St, Commons (3rd Division), Trim, Co. Meath, C15 FY24

6.	Allcare Pharmacy Trim	Knightsbridge Nursing Home, Commons (7th Division), Trim, Co. Meath, C15 PHP1
GPs		
7.	Trim General Practice	St. Martin's House, Finnegan's Way, Townparks South, Trim, Co. Meath, C15 V9HH
8.	The Cullen General Practice	Knightsbridge Primary Care Centre, Longwood Road, Commons (7th Division), Trim, Co. Meath, C15 PHP1
9.	Trim Group Practice	Trim Primary Care Centre, Longwood Road, Trim, Co. Meath, C15 PHP1
Health Centres		
10.	Trim Medical, Centric Health	Trim Primary Care Centre Longwood Road, Trim, Co. Meath, C15 PHP1

Table 3: List of the healthcare centres and the location within the 1km buffer to the subject site

Retail Services

The subject site is well served in terms of retail provision, with a wide range of convenience, comparison and specialty retail facilities located within a 1km catchment area. The retail offer within Trim is concentrated primarily along Market Street, Haggard Street, and the wider Townparks North and South areas, forming a strong and accessible town centre retail core.

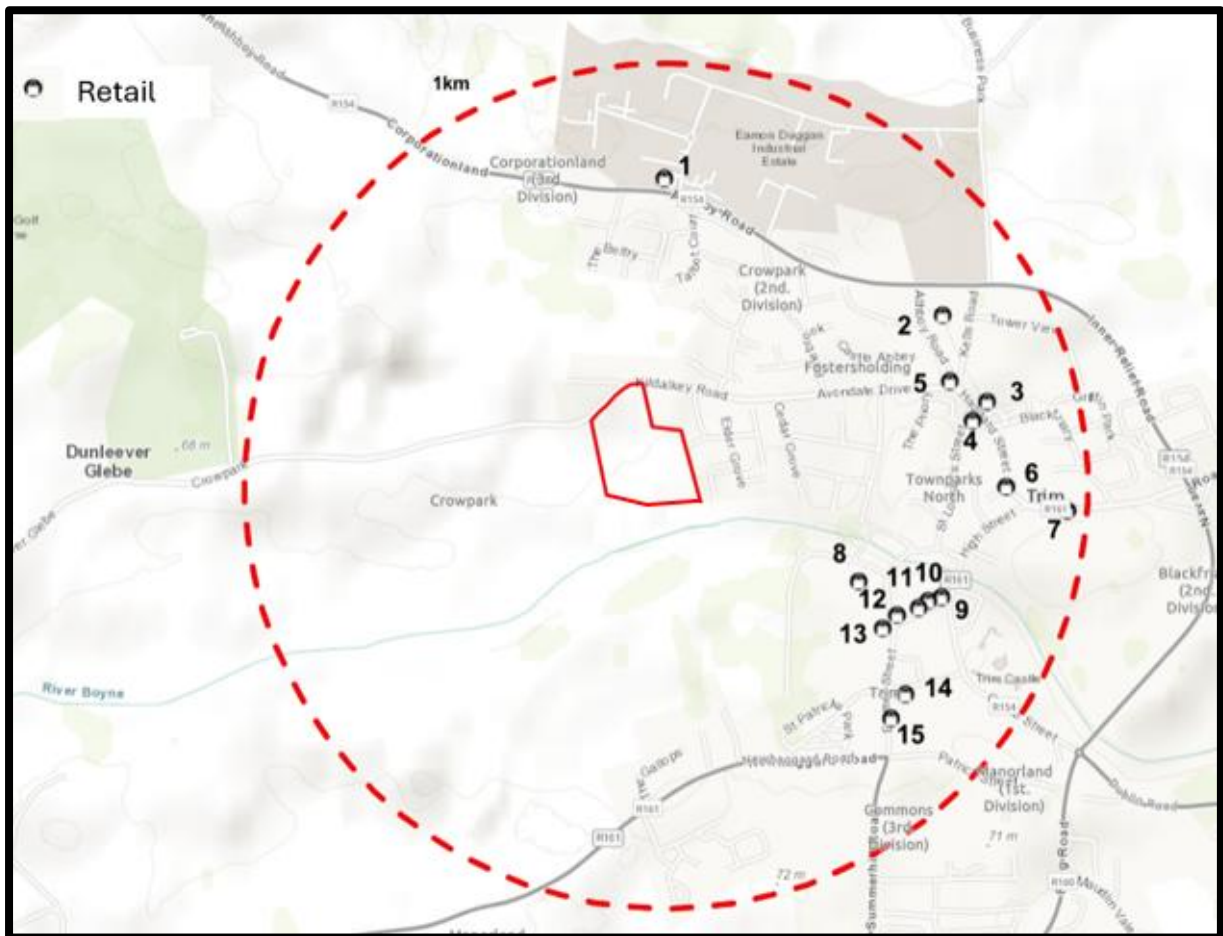


Figure 11: Retail Facilities within a 1km buffer radius from subject site

Within the 1km catchment, a number of national and local supermarkets and convenience stores are available, including Lidl, ALDI and SuperValu, alongside smaller convenience outlets such as Daybreak and O’Byrnes. This ensures that day-to-day grocery needs can be met within a short walking distance of the subject site.

In addition to convenience retail, Trim supports a range of specialty and independent retail uses, including WineHouse, Trim ‘n Healthy, Choice Trim, Tobins, and Three Store Trim, which provide niche goods and services to the local population. The area is also served by Trim Hardware, catering for DIY and home improvement needs, and Souhan’s Garage & Filling Station, which provides both fuel and convenience retail services.

The town centre also includes a modest hospitality and food offer, with facilities such as The Stile, alongside cafés and takeaways, contributing to the overall vibrancy and functionality of the retail environment.

Overall, the concentration and diversity of retail uses within the 1km catchment demonstrate that the subject site is highly accessible in terms of everyday goods and services. This level of provision supports sustainable travel patterns and aligns with the principles of the 10-minute settlement, ensuring that essential retail needs can be met within walking distance of the proposed development.

No. on Map	Retail Facility	Location
1.	Fresh Today Cloneens	Eamon Duggan Industrial Estate, Athboy Rd, Whitehall, Trim, Co. Meath
2.	Lidl	Athboy Rd, Commons (5th Division), Trim, Co. Meath, C15 AD89
3.	WineHouse	Athboy Gate, Commons (5th Division), Trim, Co. Meath
4.	Souhan's Shop Garage & Filling Station	Haggard St, Townparks North, Trim, Co. Meath, C15 CD4R
5.	SuperValu Nally's of Trim	Haggard St, Blackfriary (2nd Division), Trim, Co. Meath, C15 WN63
6.	Trim 'n Healthy	Haggard Court, 3 Haggard St, Townparks North, Trim, Co. Meath
7.	The Stile	Navan Gate, Townparks North, Baile Átha Troim, Co. Meath
8.	ALDI	Jonathan Swift St, Townparks South, Trim, Co. Meath, C15 NCP8
9.	Three Store Trim	Market St, Townparks South, Trim, Co. Meath
10.	Tobins	4 Market St, Townparks South, Trim, Co. Meath, C15 CK60
11.	Choice Trim	8 Market St, Townparks South, Trim, Co. Meath, C15 K202
12.	O'Byrnes	Market St, Townparks South, Trim, Co. Meath
13.	Daybreak	Market St, Townparks South, Trim, Co. Meath
14.	Trim Hardware	Emmet St, Townparks South, Trim, Co. Meath, C15 DC04
15.	Food Plus Polski sklep Trim	Unit 1 Saint Martin's House Finnegan's Way, Trim, Co. Meath, C15 Y865

Table 4: Retail Facilities within 1km of the Subject Site

Parks and Recreational Facilities

The subject site benefits from excellent access to a wide range of parks, open spaces and recreational facilities located within the surrounding 1km catchment area. These facilities contribute significantly to the quality of life of existing and future residents by providing opportunities for outdoor recreation, leisure activities, sports participation and cultural engagement.

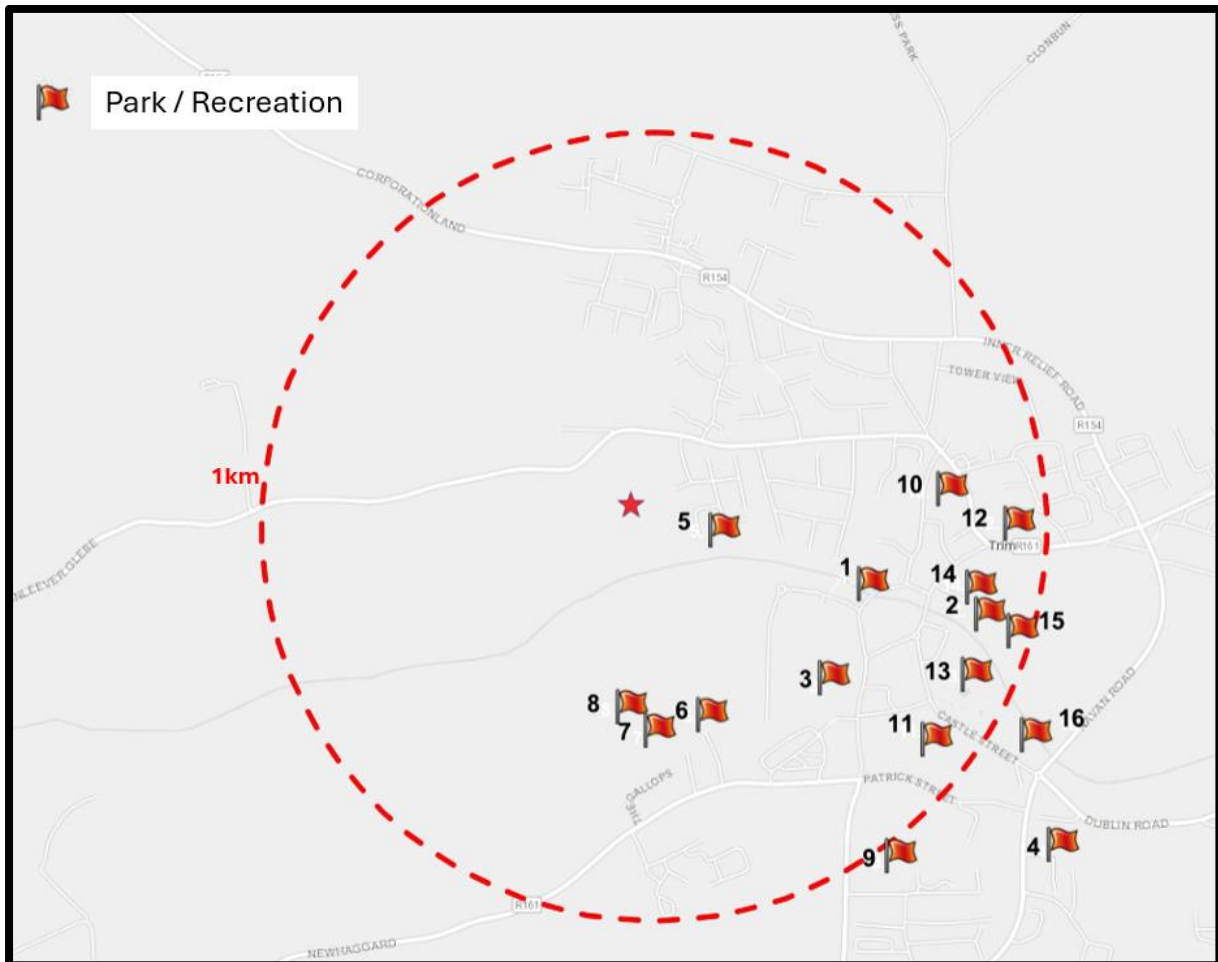


Figure 12: Green spaces & Recreational amenities located inside the 1.5km buffer to subject site

A number of formal and informal green spaces are located in close proximity to the site, including Fr. Tehan Park, the Trim Castle River Walk, and the Community Sensory Garden, all of which provide accessible public realm space within walking distance. The Boyne viewing area and surrounding river corridor further enhance the availability of passive recreational space and scenic walking routes.

The area also supports a strong sporting and community infrastructure, with facilities such as Trim GAA, Trim Athletic Club, and Trim Badminton Club providing structured opportunities for organised sport and physical activity. In addition, GK Stage Academy offers cultural and performance-based recreational activities within the locality.

Trim also contains a number of significant heritage and cultural landmarks that function as key recreational and tourist assets, including Trim Castle, St. Mary's Abbey, and Sheep Gate, all of which contribute to the town's historical character and provide important visitor and community amenities.

Religious and community facilities such as St Patrick’s Church, the Cathedral Church of St Patrick (Church of Ireland), and Living Hope Church also form part of the wider community infrastructure.

Overall, the range and diversity of parks, recreational spaces and community facilities within the 1km catchment demonstrate that the subject site is well served in terms of open space provision and recreational opportunity. These facilities are readily accessible on foot and contribute positively to health, wellbeing and the creation of a sustainable, active community in accordance with the principles of the 10-minute settlement.

Note on Map	Park / Recreational Facility Name
1.	Fr. Tehan Park
2.	Trim Castle River Walk
3.	Community Sensory Garden
4.	Trim Athletic Club
5.	Boyne viewing area
6.	Trim Badminton Club
7.	GK Stage Academy
8.	Trim GAA
9.	Mornington Heights Field
10.	Cathedral Church of St Patrick, Church of Ireland
11.	St Patrick's Church
12.	Living Hope Church
13.	Trim Castle
14.	St. Mary's Abbey, Trim
15.	Sheep Gate
16.	Trim Donkey Family

Table 5: List of Green Spaces & Recreational amenities located within the 1km buffer of the subject site

Emergency Services

The subject site benefits from strong access to key emergency services. Trim Garda Station is located along Castle Street, approximately 1.1 km from the site, providing local policing services. In addition, Trim Fire Station is situated approximately 1.3 km away along the Ring Road, ensuring prompt fire and rescue response coverage.

Childcare Audit

Tusla, the Child and Family Agency, maintains an up-to-date register and mapping system of all registered early learning and childcare services in Ireland. This dataset has been used to inform the assessment of existing childcare provision within the surrounding area of the subject site.

An assessment of childcare facilities within a 3km catchment area indicates that the subject site is well served by existing provision, with a total of seven childcare facilities identified in close proximity, as illustrated below.

In addition to existing provision, the proposed development includes a purpose-built childcare facility measuring approximately 394 sq.m, designed to accommodate up to 60 childcare places. This facility will provide a mix of full-day and sessional childcare services and is intended to cater for both children generated by the proposed development and those arising from the wider catchment area.

Having regard to the scale and nature of the proposed development, the inclusion of an on-site childcare facility will contribute positively to local childcare infrastructure and is considered sufficient to meet the anticipated demand generated by the scheme, while also providing additional capacity to support existing and future residents within the wider area.

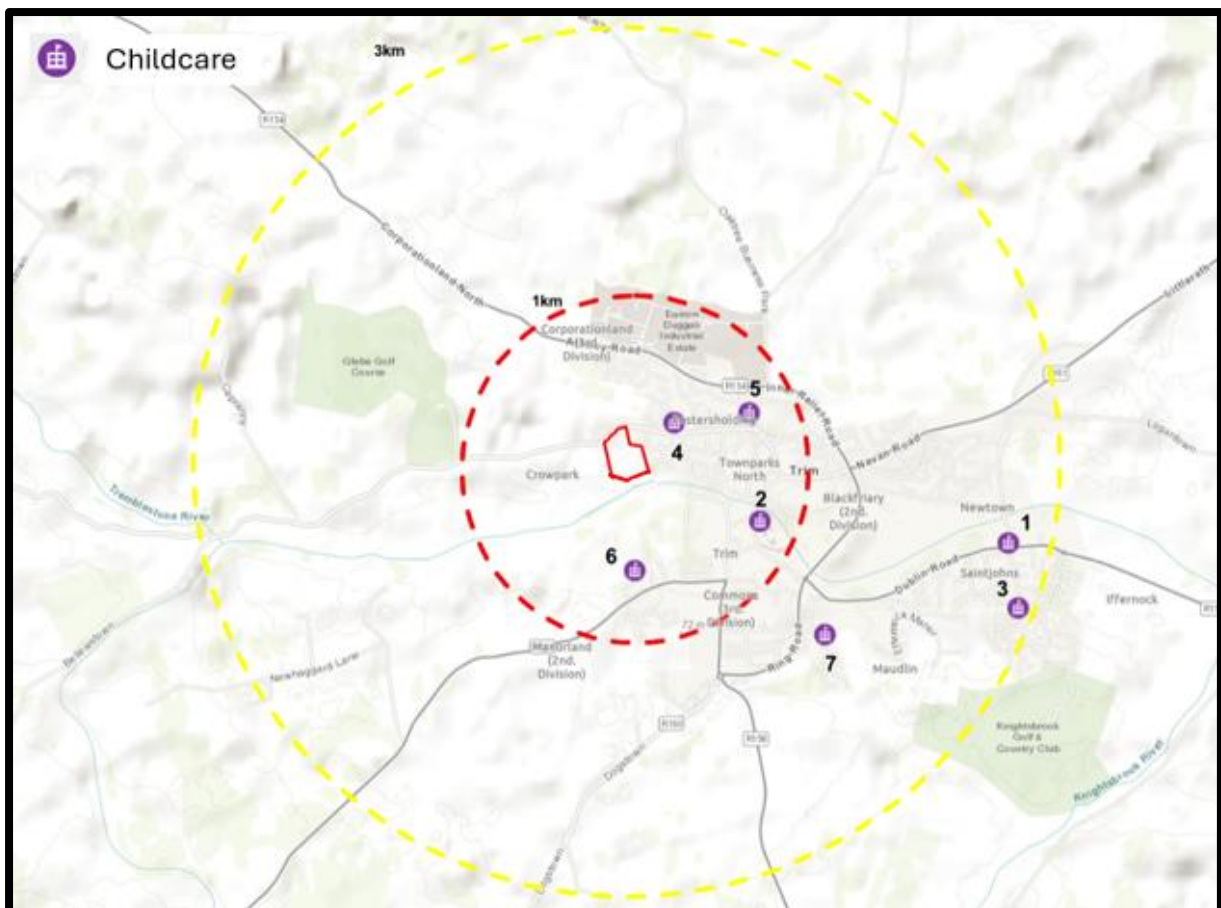


Figure 13: Childcare Facilities within 1km and 3km from subject Site

Map no.	Childcare Facility	Services Offered	No. of Children Service Can Accommodate ¹	Vacancy (March 2026) ²
1.	Abbey Montessori	Seasonal	44	No response
2.	Gulliver's Childcare	Full Day, Part Time, Sessional	109	0
3.	Little Folks Academy Limited	Full Day, Part Time, Sessional	98	No response
4.	Little Rascals Playschool	Sessional	20	No response
5.	Secret of Childhood	Sessional	11	2
6.	Teresa's Playschool	Sessional	40	7
7.	Trim Community Childcare CLG	Full day	160	No response
Total			482	9

Table 6: Childcare Facilities within 3km from subject Site

The childcare audit identifies a total of seven registered childcare facilities within the 3km catchment area, providing an overall combined capacity of approximately 482 childcare places. These facilities offer a mix of full-day, part-time and sessional services, reflecting a reasonably diverse childcare offering within the wider area.

However, the vacancy data indicates that available capacity within the existing network is limited. Of the facilities that provided vacancy information at the time of assessment, only 9 places in total were recorded as available, with Gulliver's Childcare reporting full occupancy (0 vacancies). The remaining providers either reported very limited availability or did not return vacancy data, which in itself suggests constrained operational capacity and/or high occupancy levels.

It is also notable that a number of the identified facilities did not respond to vacancy requests. While this does not confirm full occupancy, it introduces uncertainty regarding the level of spare capacity within the local childcare market. In practice, such non-response is often indicative of either high demand, administrative constraints, or limited ability to accommodate additional enrolments.

Overall, the analysis suggests that while a reasonable quantum of childcare provision exists within the 3km catchment, effective spare capacity is limited at the time of assessment. This reinforces the importance of the proposed on-site childcare facility, which will provide up to 60 childcare places and therefore make a meaningful contribution to addressing both existing demand and future demand arising from the proposed development.

Having regard to the limited recorded vacancies and the uncertainty surrounding actual available capacity, the proposed development will assist in strengthening local childcare infrastructure and improving resilience within the wider childcare network.

¹ https://www.tusla.ie/uploads/content/Meath__Mar26.pdf

² Creche response email received confirming enrolment figures and/or overall capacity.

Creche usage

Quarterly National Household Survey

The Quarterly National Household Survey (QNHS) carried out by the Central Statistics Office includes a Special Module on Childcare. The most recent report on this module was published for Quarter 3 2016. What the figures indicate is that Crèche/Montessori attendance for pre-school age children nationally is 19%, with the Mid-East at 14% (Source: CSO.ie). The data also highlights that the majority of childcare provision is informal, primarily delivered by parents/partners or unpaid relatives and friends.

Type of childcare	Pre-school children								State
	Border	Midland	West	Dublin	Mid-East	Mid-West	South-East	South-West	
Parent / Partner	65	56	59	62	65	51	67	65	62
Unpaid relative or family friend	16	13	18	16	16	16	20	22	17
Paid relative or family friend	2	5	2	3	5	1	4	2	3
Childminder / Au Pair / Nanny	13	18	21	8	13	13	13	12	13
Creche / Montessori / Playgroup / After-school facility	15	14	15	25	14	28	17	16	19
Other	1	<1	<1	1	<1	1	1	1	1
Total pre-school children using non-parental childcare	45	47	49	46	45	53	45	45	46
<i>Unweighted sample</i>	<i>198</i>	<i>136</i>	<i>234</i>	<i>525</i>	<i>244</i>	<i>189</i>	<i>230</i>	<i>316</i>	<i>2,072</i>

Figure 14: Extract from Quarterly National Household Survey, 2016 Special Module on Childcare

Census 2022

The Census 2022 provides more up to date and county specific data in relation to childcare usage. The Census identified that of the children aged 15 and under in Ireland almost one in three (331,783) were in some form of childcare. Just over four in 10 were in a crèche or similar facility (42%), while more than one in four were cared for by an unpaid relative or family member (28%).

Of those in childcare, almost two-thirds attended on a part-time basis (up to 20 hours per week) while almost one in six attended for 31 hours or more each week. For Meath County, it was found that the number of children in creche/ Montessori/ playgroup or afterschool is lower than the national average at 35.48%. It is noted, as demonstrated by the tables below, that this figure includes children being minded by a relative, childminder, au pair or nanny, a creche, Montessori, playgroup or afterschool facility.

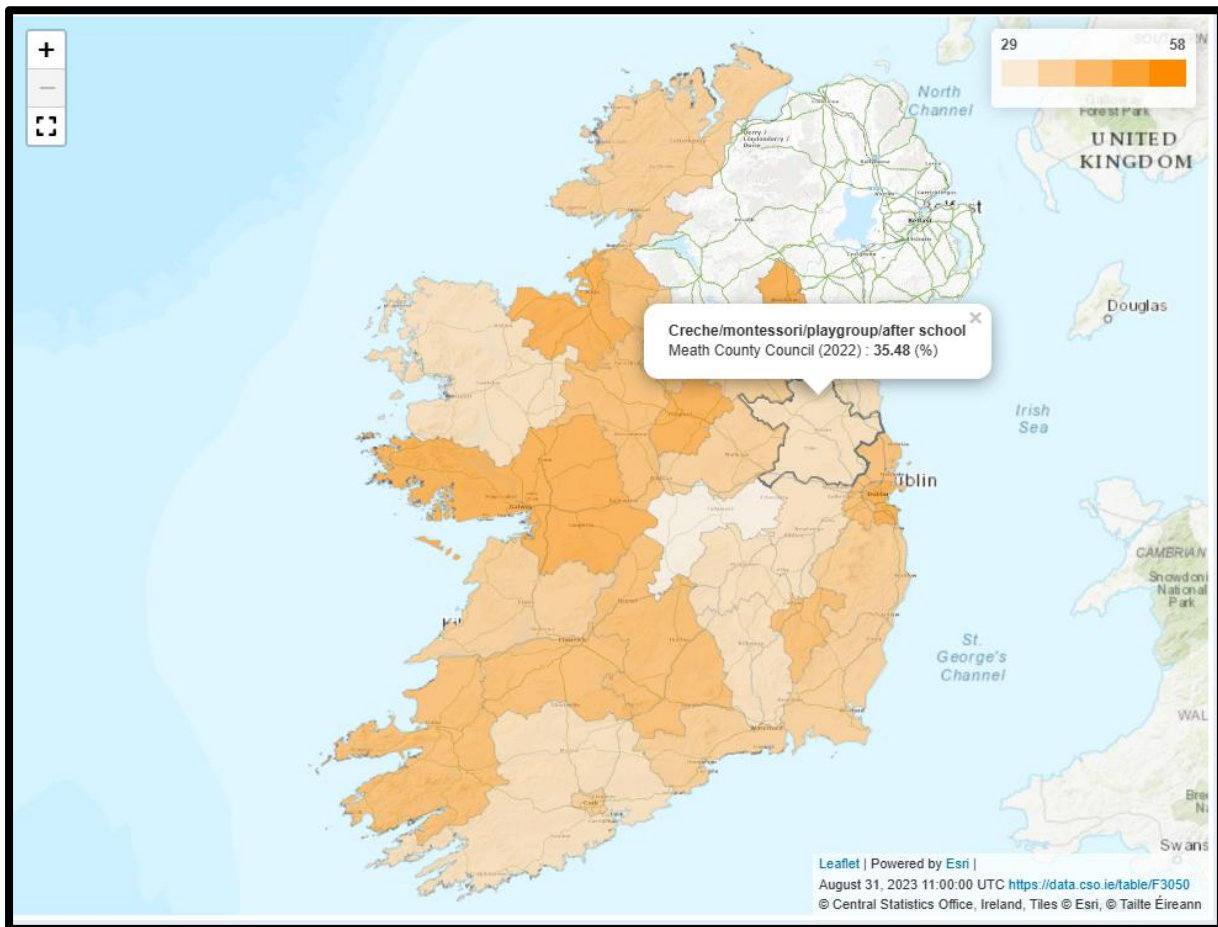


Figure 15 Census 2022 data indicating all children minded by people other than their parents

According to CSO childcare data for children under 15 years of age, County Meath has a total child population of 50,232. Of these, 34,018 children are not recorded as attending a crèche, Montessori, playgroup or after-school facility, indicating that a significant proportion of children are either cared for within the home environment or through other childcare arrangements.

In terms of childcare arrangements, 4,619 children in Meath are cared for by an unpaid relative or family member, while a further 1,151 children are cared for by a paid relative. A total of 3,397 children are cared for by a childminder in the childminder's home, with 984 children cared for by an au pair, nanny or childminder in the child's home.

Formal childcare settings account for 5,752 children in County Meath who attend crèches, Montessori schools, playgroups or after-school facilities. A smaller proportion of children are recorded in other childcare settings, including special needs facilities or breakfast clubs (164 children), while 147 children did not state their childcare type.

Overall, the data indicates that while formal childcare provision in Meath is significant, the majority of children under 15 years of age are not recorded as attending formal childcare settings. This highlights the continued importance of home-based and alternative childcare arrangements, while also demonstrating the role of formal childcare infrastructure in supporting working families across the county.

Statistic	Census Year	Sex	Administrative Counties	Type of Childcare	Age	Unit	Value
Children under 15 years of age	2022	Both sexes	Meath County Council	All children aged under 15 years of age	0 - 2 years	Number	3,216
Children under 15 years of age	2022	Both sexes	Meath County Council	All children aged under 15 years of age	3 - 4 years	Number	3,875
Children under 15 years of age	2022	Both sexes	Meath County Council	Unpaid relative or family member	0 - 2 years	Number	946
Children under 15 years of age	2022	Both sexes	Meath County Council	Unpaid relative or family member	3 - 4 years	Number	508
Children under 15 years of age	2022	Both sexes	Meath County Council	Paid relative or family member	0 - 2 years	Number	243
Children under 15 years of age	2022	Both sexes	Meath County Council	Paid relative or family member	3 - 4 years	Number	166
Children under 15 years of age	2022	Both sexes	Meath County Council	Childminder (in childminder's home)	0 - 2 years	Number	767
Children under 15 years of age	2022	Both sexes	Meath County Council	Childminder (in childminder's home)	3 - 4 years	Number	589
Children under 15 years of age	2022	Both sexes	Meath County Council	Au pair/nanny/childminder (in child's home)	0 - 2 years	Number	152
Children under 15 years of age	2022	Both sexes	Meath County Council	Au pair/nanny/childminder (in child's home)	3 - 4 years	Number	145
Children under 15 years of age	2022	Both sexes	Meath County Council	Creche/Montessori/playgroup/after school	0 - 2 years	Number	1,083
Children under 15 years of age	2022	Both sexes	Meath County Council	Creche/Montessori/playgroup/after school	3 - 4 years	Number	2,425
Children under 15 years of age	2022	Both sexes	Meath County Council	Other (including special needs facility, breakfast club)	0 - 2 years	Number	8
Children under 15 years of age	2022	Both sexes	Meath County Council	Other (including special needs facility, breakfast club)	3 - 4 years	Number	15
Children under 15 years of age	2022	Both sexes	Meath County Council	Type of childcare not stated	0 - 2 years	Number	17
Children under 15 years of age	2022	Both sexes	Meath County Council	Type of childcare not stated	3 - 4 years	Number	27

Figure 16 Extract from Census 2022 showing Meath County 0-4 population and breakdown regarding childcare

As shown in the Census 2022 data for County Meath, there are 3,216 children in the 0–2 year age cohort and 3,875 children in the 3–4 year age cohort, giving a combined total of 7,091 children in the 0–4 year age group.

Within this cohort, 3,508 children attend a crèche, Montessori, playgroup or afterschool facility, representing approximately 49.5% of all children aged 0–4 years. A further proportion are cared for by relatives, childminders, nannies or au pairs, demonstrating the importance of informal and home-based childcare arrangements within the county. The data also demonstrates a clear age-related trend, with participation in formal childcare increasing significantly as children approach pre-school age.

For the purposes of this assessment, childcare demand is assessed using a range of scenarios applied to the population most likely to require childcare (0–4 years). This approach provides both evidence-based and sensitivity-tested estimates of potential childcare demand arising from the proposed development.

The following scenarios have been assessed:

- 35.94% participation rate, representing the County Meath Census 2022 figure for children receiving all forms of non-parental childcare.
- 49.5% participation rate, representing the proportion of children aged 0–4 years in County Meath attending a crèche, Montessori, playgroup or afterschool facility, based on Census 2022 data.
- 50% participation rate, adopted as a sensitivity-based worst-case scenario to account for potential increases in childcare demand associated with future demographic growth, labour-force participation trends and changing childcare preferences.

Demand for Childcare Places Likely to be Generated by Proposed Scheme

The table below provides a breakdown of the proposed units.

Unit Size	Apartment	Houses	Total	%
1 Bed	16	0	16	8.7%
2 Bed	40	0	40	21.9%
3 Bed	0	99	99	54.1%
4 Bed	0	28	28	15.3%
Total	56	127	183	100%

Based on an average household size of 2.74 (2022 CSO Census) then the estimated population of the proposed development would be c. 502 persons for the proposed development. Based on the 2022 Census figures for the area then the population estimate for the 0-4 age cohort (pre-school at 6.0% of total population for the 2 electoral divisions within 1km of the subject site) projects a possible number of children aged 0-4 to be c. 30.

As per section 4.7 of the 2025 Apartment Guidelines recommends, one bed units should be excluded when calculating childcare demand in new developments. Excluding the 1-bed apartments leaves 167 units for the proposed LRD development, with a population of c.458 of which c.27 will be in the 0-4 age range.

The Guidelines also suggests that in some instances 2-bed units could also be omitted, excluding 2-bed apartment and 2-bed duplexes decreases the number of residential units to 127 units. This would result in an estimated population of c. 248 and c. 21 children in the 0-4 age category.

Notwithstanding, as detailed above, not all 0–4-year-olds are likely to require private childcare given that some will be cared for by parents, guardians, relatives and/or childminders. The 2016 QNHS indicated that in the Dublin region on average only 25% of pre-school age children attended private childcare in 2016. However, the census for Meath County has provided more detailed information as set out above. It was considered therefore to use that data which is more recent and local. Therefore, the site, both on its own and in conjunction with the phase 1 lands, has been assessed against the following criteria:

- 35.48% Census figure for County Meath representing the figure for children in all forms of care.
- 49.4% Census for County Meath for the 0-4 age category actually in creche/ Montessori/ playgroup/ afterschool. This is chosen as it is higher than the QNHS data from 2019 and it is more recent so it will provide a worse case scenario.
- 50% worst case scenario assumption.

The above calculations are summarised in the table below.

	2001 Guidelines	2025 Apartment Guidelines	2025 Apartment Guidelines
	All Units	Without 1 beds Apartments	Removing 2 bed apartments/duplexes
SUBJECT LRD SITE			
Calculation based on 2001 Guidelines			
No. of units	183	167	127

2001 Guidelines (20 no. spaces/75 no. units)	49	45	34
Refined estimate based on population analysis including advice from the 2025 Apartment Guidelines (2.74 per household, assuming a higher household ratio)			
Total Population generated	502	458	348
Population 0-4 (6.0% of Pop)	30	27	21
Estimate based on inclusion of Census 2022 data for Meath County			
Total Requiring Childcare (35.48% based on the demand for under 15)	11	10	8
Total Requiring Childcare (49.5% based on the demand for 0-4)	15	13	10
Worst case scenario total Requiring Childcare (50%)	15	14	11

Table 7: Childcare Demand Calculations

Based on the analysis of the proposed LRD site, the estimated requirement for childcare spaces varies depending on the methodology and assumptions applied. Applying the Childcare Facilities Guidelines for Planning Authorities (2001), the development would generate a requirement for approximately 34 to 49 childcare places, depending on the unit mix scenario assessed.

Using the population-based approach advocated by the Sustainable Urban Housing: Design Standards for New Apartments Guidelines for Planning Authorities (2025), a more refined assessment indicates that demand is likely to be significantly lower. Based on Census 2022 childcare participation rates for County Meath, the estimated requirement ranges from approximately 8 to 15 childcare places across the various development scenarios. Applying the County Meath childcare participation rate of 35.48% to the estimated 0–4-year-old population generated by the development results in a demand of approximately 8–11 childcare places. Applying the Census-derived formal childcare participation rate of 49.5% results in an estimated demand of approximately 10–15 childcare places.

Under a sensitivity-based worst-case scenario, whereby 50% of children aged 0–4 years require childcare provision, demand would range from approximately 11 to 15 childcare places. Notably, this produces a similar outcome to the Census-derived formal childcare participation rate, indicating that the latter already represents a relatively robust and conservative assessment of likely childcare demand.

Overall, the assessment indicates that the likely childcare demand arising from the proposed development would be in the order of 10–15 childcare places, with demand most likely to fall within this range based on current Census evidence and local childcare participation patterns.

Having regard to the scale and nature of the proposed development, the proposed dwelling mix, and the existing childcare infrastructure within the surrounding area, it is considered that sufficient capacity exists to accommodate the modest additional demand generated by the scheme. Furthermore, a number of existing childcare facilities continue to serve the wider area, while additional childcare capacity is expected to come on stream through permitted and under-construction facilities.

Accordingly, it is considered that the proposed development will not give rise to any significant deficiency in childcare provision and that the anticipated childcare demand can be adequately accommodated within the existing and committed childcare network serving the area.

Proposed Childcare Facility

The proposal includes a purpose-built childcare facility measuring approximately 394 sq.m, together with approximately 193 sq.m of dedicated outdoor play space. The facility is designed to accommodate up to 60 childcare places across a range of age groups from 1 to 6 years, providing both full-day and sessional childcare services. The creche includes four childcare rooms, a dedicated sleep room, kitchen and dining facilities, staff accommodation, office space, storage areas and associated ancillary facilities.

The creche is located to the west of the site in a highly accessible location, providing convenient access for residents and supporting walking and cycling as sustainable modes of travel. Dedicated parking is provided for staff and parents, including a set-down area immediately adjacent to the building. The facility also benefits from a secure and enclosed outdoor play area located to the rear of the building, which is designed to cater for all age groups and is integrated with the wider open space network of the development.

Having regard to the scale of the proposed residential development and the childcare demand assessment undertaken, the size and capacity of the proposed creche are considered appropriate. The facility will provide childcare capacity significantly in excess of the estimated demand generated by the development itself, thereby contributing positively to childcare provision within the wider area. As such, the proposed creche will have a beneficial effect on population and human health by supporting access to high-quality early years childcare services for both existing and future residents.



Figure 17: Proposed layout of Creche Facility



Figure 18: Proposed Creche Facility

As part of the Social Infrastructure Audit, including the Childcare Assessment, MCG Planning consulted with the Meath County Childcare Committee to seek feedback on the proposed development and the findings of the childcare needs assessment. A copy of the Committee's response is contained in Appendix G of this Report.

In its response, the Meath County Childcare Committee confirmed that it was satisfied with the findings of the Social and Community Infrastructure Audit and expressed its support for the proposed childcare facility, which will provide approximately 60 childcare places. The Committee advised that its own assessment of childcare provision within the area aligns with the conclusions of the report, identifying an existing shortage of both full-time and part-time childcare places, as well as school-age childcare provision.

The Committee welcomed the proposed development, noting that the additional childcare capacity would make a positive contribution to meeting local demand. Particular support was expressed for the inclusion of the substantial outdoor play area, which was recognised as providing significant long-term benefits for children attending the facility.

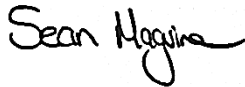
The Committee further noted that the prospective childcare operator is well known to it through the delivery of high-quality early years care and education services at a number of existing facilities throughout County Meath. Overall, the Committee's response provides strong support for both the scale and nature of the proposed childcare provision.

Conclusion

The Social Infrastructure Audit has demonstrated that the subject site is located in close proximity to a range of facilities that will meet the needs of future residents of the proposed development. The proposed development will generate a demand on the existing services and facilities, such as public open space and natural amenities.

The proposed development includes a childcare facility c. 394sq.m with an open space of c. 193sq.m and has the capacity to accommodate 60 no. children. Therefore, any deficit in childcare facilities in the area has been adequately addressed in the development. The subject site is also well served by healthcare facilities within a short distance from the site. In addition, there are an extensive range of GP clinics and pharmacies located in the area which will serve the needs of future residents at the subject site.

Yours faithfully,



Sean Maguire

Senior Planner

Appendix A – Responses to correspondence with Childcare Facilities

Re: Enrolment Figures - Secret of Childhood



Sarah Hallahan <secretofchildhood@gmail.com>
 To: Chris Burke Young

Reply
 Reply All
 Forward

Fri 29/05/2026 13:08

Hi Chris,

Yes I can confirm that the table in your email is correct.
 Currently I have two vacancies and no waiting list.

Best Regards
 Sarah

On Fri 29 May 2026, 11:33 Chris Burke Young, <Chris@mcgplanning.ie> wrote:

Hi Sarah,

I am writing to you in relation to a school capacity/creche capacity assessment being carried out by McGill Planning Limited on behalf of our client. This assessment will be submitted with a planning application to Meath County Council for an LRD development consisting of c. 184 no. residential units at a site at Kildalkey Road, **Trim**, County Meath. I would be grateful if you could you confirm if the below figure is correct and clarify your current vacancy/enrolment capacity.

Please see the information below which we have taken from Tusla, Schooldays.ie and Pobal databases as of March 2026.

Childcare Facility	Services Offered	No. of Children Service Can Accommodate ¹	Vacancy
Secret of Childhood	Sessional	11	

FW: **Trim** Enrolment Figures - Gulliver's Childcare

Marie Brophy <m.brophy@gulliverstrim.ie>
To: Chris Burke Young

Reply Reply All Forward Mon 23/02/2026 12:02

Start your reply all with: [Great, thanks for confirming!](#) [Ok, thank you.](#) [Thank you for your confirmation.](#) Feedback

Hi Chris,
Yes, the information below is correct and our service is currently full.
Kind regards
Marie

From: Chris Burke Young <Chris@mcgplanning.ie>
Sent: Monday 23 February 2026 10:25
To: Gullivers Info <info@gulliverstrim.ie>
Cc: Sean Maguire <sean@mcgplanning.ie>
Subject: **Trim** Enrolment Figures - Gulliver's Childcare

Good afternoon,

I am writing to you in relation to a school capacity/creche capacity assessment being carried out by McGill Planning Limited on behalf of our client. This assessment will be submitted with a planning application to Meath County Council for an LRD development consisting of c. 184 no. residential units at a site at Kildalkey Road, **Trim**, County Meath. I would be grateful if you could you confirm if the below figure is correct and clarify your current vacancy/enrolment capacity.

Please see the information below which we have taken from Tusla, Schooldays.ie and Pobal databases as of February 2026.

Childcare Facility	Services Offered	No. of Children Service Can Accommodate 1	Vacancy
Gulliver's Childcare	Full Day, Part Time, Sessional	109	

Best Regards,

Chris Burke Young

Re: **Trim** Enrolment Figures - Secret of Childhood

Teresa Egan <teresaspayschool@hotmail.com>
To: Chris Burke Young
Cc: Sean Maguire

Reply Reply All Forward Mon 23/02/2026 10:43

If there are problems with how this message is displayed, click here to view it in a web browser.

Start your reply all with: [Ok, thank you.](#) [Great, thanks for the info!](#) [Thank you for getting back to me!](#) Feedback

Apologies, yes we do have some vacancies for September as we are currently just completing our bookings.

As it stands we have capacity for 7 children in September but this is likely to change.

Sent from [Outlook for Android](#)

From: Chris Burke Young <Chris@mcgplanning.ie>
Sent: Monday, February 23, 2026 10:38:54 AM
To: Teresa Egan <teresaspayschool@hotmail.com>
Cc: Sean Maguire <sean@mcgplanning.ie>
Subject: Re: **Trim** Enrolment Figures - Secret of Childhood

Hi Sinead,

Thank you for the quick response, I just want to confirm that you have no vacancy?

Chris

From: Teresa Egan <teresaspayschool@hotmail.com>
Sent: Monday, February 23, 2026 10:35
To: Chris Burke Young <Chris@mcgplanning.ie>
Cc: Sean Maguire <sean@mcgplanning.ie>
Subject: Re: **Trim** Enrolment Figures - Secret of Childhood

Hi Chris,

Yes that is correct.

Thanks,

Sinead

Appendix B – Correspondence Issued to Childcare Facilities by email

Trim Enrolment Figures - Trim Community Childcare CLG



Chris Burke Young
 To: coisceimeanna@crannsupportgroup.ie
 Cc: Sean Maguire

Reply
 Reply All
 Forward

Mon 23/02/2026 10:37

[If there are problems with how this message is displayed, click here to view it in a web browser.](#)

Good afternoon,

I am writing to you in relation to a school capacity/creche capacity assessment being carried out by McGill Planning Limited on behalf of our client. This assessment will be submitted with a planning application to Meath County Council for an LRD development consisting of c. 184 no. residential units at a site at Kildalkey Road, Trim, County Meath. I would be grateful if you could confirm if the below figure is correct and clarify your current vacancy/enrolment capacity.

Please see the information below which we have taken from Tusla, Schooldays.ie and Pobal databases as of February 2026.

Childcare Facility	Services Offered	No. of Children Service Can Accommodate ¹	Vacancy
Trim Community Childcare CLG	Full day	160	

Best Regards,

Chris Burke Young
 Planner
 McGill Planning Ltd.
 9 Pembroke Street Upper
 Dublin 2
 D02 KR83

On Fri 29 May 2026, 11:33 Chris Burke Young, <Chris@mcgplanning.ie> wrote:

Hi Sarah,

I am writing to you in relation to a school capacity/creche capacity assessment being carried out by McGill Planning Limited on behalf of our client. This assessment will be submitted with a planning application to Meath County Council for an LRD development consisting of c. 184 no. residential units at a site at Kildalkey Road, Trim, County Meath. I would be grateful if you could confirm if the below figure is correct and clarify your current vacancy/enrolment capacity.

Please see the information below which we have taken from Tusla, Schooldays.ie and Pobal databases as of March 2026.

Childcare Facility	Services Offered	No. of Children Service Can Accommodate ¹	Vacancy
Secret of Childhood	Sessional	11	

Best Regards and thank you for your help,

From: Chris Burke Young <Chris@mcgplanning.ie>
 Sent: Monday 23 February 2026 10:25
 To: Gullivers Info <info@gulliverstrim.ie>
 Cc: Sean Maguire <sean@mcgplanning.ie>
 Subject: Trim Enrolment Figures - Gulliver's Childcare

Good afternoon,

I am writing to you in relation to a school capacity/creche capacity assessment being carried out by McGill Planning Limited on behalf of our client. This assessment will be submitted with a planning application to Meath County Council for an LRD development consisting of c. 184 no. residential units at a site at Kildalkey Road, Trim, County Meath. I would be grateful if you could confirm if the below figure is correct and clarify your current vacancy/enrolment capacity.

Please see the information below which we have taken from Tusla, Schooldays.ie and Pobal databases as of February 2026.

Childcare Facility	Services Offered	No. of Children Service Can Accommodate ¹	Vacancy
Gulliver's Childcare	Full Day, Part Time, Sessional	109	

Best Regards,

Chris Burke Young
 Planner
 McGill Planning Ltd.
 9 Pembroke Street Upper
 Dublin 2
 D02 KR83

From: Chris Burke Young <Chris@mcgplanning.ie>
 Sent: Monday, February 23, 2026 10:33:53 AM
 To: teresasplayschool@hotmail.com <teresasplayschool@hotmail.com>
 Cc: Sean Maguire <sean@mcgplanning.ie>
 Subject: Trim Enrolment Figures - Secret of Childhood

Good afternoon,

I am writing to you in relation to a school capacity/creche capacity assessment being carried out by McGill Planning Limited on behalf of our client. This assessment will be submitted with a planning application to Meath County Council for an LRD development consisting of c. 184 no. residential units at a site at Kildalkey Road, Trim, County Meath. I would be grateful if you could confirm if the below figure is correct and clarify your current vacancy/enrolment capacity.

Please see the information below which we have taken from Tusla, Schooldays.ie and Pobal databases as of February 2026.

Childcare Facility	Services Offered	No. of Children Service Can Accommodate ¹	Vacancy
Teresa's Playschool	Sessional	40	

Best Regards,

Chris Burke Young

Trim Enrolment Figures - Little Rascals Playschool

CB Chris Burke Young
 To: littleascals31@gmail.com
 Cc: Sean Maguire

Reply
 Reply All
 Forward

 Mon 23/02/2026 10:28

[If there are problems with how this message is displayed, click here to view it in a web browser.](#)

Good afternoon,

I am writing to you in relation to a school capacity/creche capacity assessment being carried out by McGill Planning Limited on behalf of our client. This assessment will be submitted with a planning application to Meath County Council for an LRD development consisting of c. 184 no. residential units at a site at Kildalkey Road, **Trim**, County Meath. I would be grateful if you could confirm if the below figure is correct and clarify your current vacancy/enrolment capacity.

Please see the information below which we have taken from Tusla, Schooldays.ie and Pobal databases as of February 2026.

Childcare Facility	Services Offered	No. of Children Service Can Accommodate ¹	Vacancy
Little Rascals Playschool	Sessional	20	

Best Regards,

Chris Burke Young
 Planner
 McGill Planning Ltd.
 9 Pembroke Street Upper
 Dublin 2
 D02 KR83

Email: chris@mcgplanning.ie

Trim Enrolment Figures - Little Folks Academy Limited

CB Chris Burke Young
 To: info@littlefolksacademy.ie
 Cc: Sean Maguire

Reply
 Reply All
 Forward

 Mon 23/02/2026 10:26

[If there are problems with how this message is displayed, click here to view it in a web browser.](#)

Good afternoon,

I am writing to you in relation to a school capacity/creche capacity assessment being carried out by McGill Planning Limited on behalf of our client. This assessment will be submitted with a planning application to Meath County Council for an LRD development consisting of c. 184 no. residential units at a site at Kildalkey Road, **Trim**, County Meath. I would be grateful if you could confirm if the below figure is correct and clarify your current vacancy/enrolment capacity.

Please see the information below which we have taken from Tusla, Schooldays.ie and Pobal databases as of February 2026.

Childcare Facility	Services Offered	No. of Children Service Can Accommodate ¹	Vacancy
Little Folks Academy Limited	Full Day, Part Time, Sessional	98	

Best Regards,

Chris Burke Young

Appendix C – Correspondence issued to Local Schools by email

Trim Enrolment Figures - Scoil Mhuire

Chris Burke Young
 To: info@scoilmhuiretrim.ie
 Cc: [Sean Maguire](#)

Reply Reply All Forward

Mon 23/02/2026 10:10

If there are problems with how this message is displayed, click here to view it in a web browser.

Good afternoon,

I am writing to you in relation to a school capacity/creche capacity assessment being carried out by McGill Planning Limited on behalf of our client. This assessment will be submitted with a planning application to Meath County Council for an LRD development consisting of c. 184 no. residential units at a site at Kildalkey Road, Trim, County Meath. I would be grateful if you could you confirm if the below figure is correct and clarify your current vacancy/enrolment capacity.

Please see the information below which we have taken from Tusla, Schooldays.ie and Pobal databases as of February 2026.

Post Primary School	Distance	Roll Number	Enrolment (24/25)	
			Boys	Girls
Scoil Mhuire	1600 m	64450R		814

Best Regards,

Chris Burke Young
 Planner

Trim Enrolment Figures - Boyne Community School

Chris Burke Young
 To: info@boynecs.ie
 Cc: [Sean Maguire](#)

Reply Reply All Forward

Mon 23/02/2026 10:12

If there are problems with how this message is displayed, click here to view it in a web browser.

Good afternoon,

I am writing to you in relation to a school capacity/creche capacity assessment being carried out by McGill Planning Limited on behalf of our client. This assessment will be submitted with a planning application to Meath County Council for an LRD development consisting of c. 184 no. residential units at a site at Kildalkey Road, Trim, County Meath. I would be grateful if you could you confirm if the below figure is correct and clarify your current vacancy/enrolment capacity.

Please see the information below which we have taken from Tusla, Schooldays.ie and Pobal databases as of February 2026.

Post Primary School	Distance	Roll Number	Enrolment (24/25)	
			Boys	Girls
Boyne Community School	1900 m	91508C	770	238

Best Regards,

Chris Burke Young
 Planner

Trim Enrolment Figures - St Patricks National School

CB Chris Burke Young
 To: stpatricksntrim@hotmail.com
 Cc: [Sean Maguire](#)

Reply Reply All Forward
 Mon 23/02/2026 10:14

If there are problems with how this message is displayed, click here to view it in a web browser.

Good afternoon,

I am writing to you in relation to a school capacity/creche capacity assessment being carried out by McGill Planning Limited on behalf of our client. This assessment will be submitted with a planning application to Meath County Council for an LRD development consisting of c. 184 no. residential units at a site at Kildalkey Road, **Trim**, County Meath. I would be grateful if you could confirm if the below figure is correct and clarify your current vacancy/enrolment capacity.

Please see the information below which we have taken from Tusla, Schooldays.ie and Pobal databases as of February 2026.

Primary School	Distance	Roll Number	Enrolment (24/25)	
			Boys	Girls
St Patricks National School	950 m	13775K	22	26

Best Regards,

Chris Burke Young
 ..

Trim Enrolment Figures - St Mary's Convent Primary School

CB Chris Burke Young
 To: office@stmarystrim.ie
 Cc: [Sean Maguire](#)

Reply Reply All Forward
 Mon 23/02/2026 10:15

If there are problems with how this message is displayed, click here to view it in a web browser.

Good afternoon,

I am writing to you in relation to a school capacity/creche capacity assessment being carried out by McGill Planning Limited on behalf of our client. This assessment will be submitted with a planning application to Meath County Council for an LRD development consisting of c. 184 no. residential units at a site at Kildalkey Road, **Trim**, County Meath. I would be grateful if you could confirm if the below figure is correct and clarify your current vacancy/enrolment capacity.

Please see the information below which we have taken from Tusla, Schooldays.ie and Pobal databases as of February 2026.

Primary School	Distance	Roll Number	Enrolment (24/25)	
			Boys	Girls
St Mary's Convent Primary School	1600 m	16646O	160	361

Best Regards,

Chris Burke Young

Trim Enrolment Figures - St Michaels Boys National School

Chris Burke Young
 To: scoilmhichil@gmail.com
 Cc: Sean Maguire

Reply Reply All Forward Mon 23/02/2026 10:16

If there are problems with how this message is displayed, click here to view it in a web browser.

Good afternoon,

I am writing to you in relation to a school capacity/creche capacity assessment being carried out by McGill Planning Limited on behalf of our client. This assessment will be submitted with a planning application to Meath County Council for an LRD development consisting of c. 184 no. residential units at a site at Kildalkey Road, **Trim**, County Meath. I would be grateful if you could confirm if the below figure is correct and clarify your current vacancy/enrolment capacity.

Please see the information below which we have taken from Tusla, Schooldays.ie and Pobal databases as of February 2026.

Primary School	Distance	Roll Number	Enrolment (24/25)	
			Boys	Girls
St Michaels Boys National School	1700 m	05630L	287	7

Best Regards,

Chris Burke Young

Trim Enrolment Figures - **Trim** Educate Together National school

Chris Burke Young
 To: info@trimeducate.together.com
 Cc: Sean Maguire

Reply Reply All Forward Mon 23/02/2026 10:17

If there are problems with how this message is displayed, click here to view it in a web browser.

Good afternoon,

I am writing to you in relation to a school capacity/creche capacity assessment being carried out by McGill Planning Limited on behalf of our client. This assessment will be submitted with a planning application to Meath County Council for an LRD development consisting of c. 184 no. residential units at a site at Kildalkey Road, **Trim**, County Meath. I would be grateful if you could confirm if the below figure is correct and clarify your current vacancy/enrolment capacity.

Please see the information below which we have taken from Tusla, Schooldays.ie and Pobal databases as of February 2026.

Primary School	Distance	Roll Number	Enrolment (24/25)	
			Boys	Girls
Trim Educate Together National school	2200 m	20444B	87	87

Best Regards,

Chris Burke Young

Enrolment Figures - Gaelscoil Na Bóinne



Chris Burke Young
To: eolas@gaelscoilnaboinne.ie
Cc: [Sean Maguire](#)

☺ Reply Reply All Forward 📧 ⋮
Mon 23/02/2026 10:19

[If there are problems with how this message is displayed, click here to view it in a web browser.](#)

Good afternoon,

I am writing to you in relation to a school capacity/creche capacity assessment being carried out by McGill Planning Limited on behalf of our client. This assessment will be submitted with a planning application to Meath County Council for an LRD development consisting of c. 184 no. residential units at a site at Kildalkey Road, **Trim**, County Meath. I would be grateful if you could confirm if the below figure is correct and clarify your current vacancy/enrolment capacity.

Please see the information below which we have taken from Tusla, Schooldays.ie and Pobal databases as of February 2026.

Primary School	Distance	Roll Number	Enrolment (24/25)	
			Boys	Girls
Gaelscoil Na Bóinne	2900 m	20051F	100	106

Best Regards,

Chris Burke Young

Appendix D – Correspondence received to Local Schools by email

Hi Chris,
 Thank you for your email.
 We currently have 99 Boys and 103 Girls in Gaelscoil na Bóinne.

Le meas
 Eleanor

From: Chris Burke Young <Chris@mcgplanning.ie>
Sent: Monday 23 February 2026 10:19
To: eolas@gaelscoilnaboinne.ie
Cc: Sean Maguire <sean@mcgplanning.ie>
Subject: Enrolment Figures - Gaelscoil Na Bóinne

Good afternoon,

I am writing to you in relation to a school capacity/creche capacity assessment being carried out by McGill Planning Limited on behalf of our client. This assessment will be submitted with a planning application to Meath County Council for an LRD development consisting of c. 184 no. residential units at a site at Kildalkey Road, Trim, County Meath. I would be grateful if you could confirm if the below figure is correct and clarify your current vacancy/enrolment capacity.

Please see the information below which we have taken from Tusla, Schooldays.ie and Pobal databases as of February 2026.

Primary School	Distance	Roll Number	Enrolment (24/25)	
			Boys	Girls
Gaelscoil Na Bóinne	2900 m	20051F	100	106

Re: Trim Enrolment Figures - St Mary's Convent Primary School

Rebecca Sherry <rsherry@stmarystrim.ie>
 To: Chris Burke Young

If there are problems with how this message is displayed, click here to view it in a web browser.

Start your reply all with: Feedback

Reply Reply All Forward Mon 23/02/2026 14:20

Dear Chris

Rebecca is still out on holiday.
 Info I have so far for 2025-2026 156 boys and 370 girls.
 Hope that helps.

Kind regards.
 Lara

Trim Enrolment Figures - Boyne Community School

Jean Ryan <principal@boynecs.ie>
 To: Chris Burke Young

Start your reply all with: Feedback

Reply Reply All Forward Tue 24/02/2026 14:34

Good afternoon Chris,
 Just to confirm our current enrolment for 2025/26 academic year stands at 1009.
 Breakdown 235 girls and 774 boys.
 We are full for incoming first years next year, taking in 192 students.
 I hope this helps.
 Kind regards,
 Jean Ryan
 Principal

Re: **Trim** Enrolment Figures - St Patricks National School



Trevor Larke <stpatricksnstrim@hotmail.com>
To: Chris Burke Young
Cc: Sean Maguire

☺ Reply ↶ Reply All → Forward 📧 ⋮
Wed 23/02/2026 10:52

🔗 If there are problems with how this message is displayed, click here to view it in a web browser.

Start your reply all with: [Great, thanks for confirming!](#) [Wonderful, thank you!](#) [Great, thank you so much!](#) [Feedback](#)

Hi

Yes, that information is correct for this school year (2025/26).

We have capacity for further enrolment here - the next teacher appointment figure is 78 so technically we have spare capacity for 30 more pupils.

Kind regards

Trevor Larke

Sent from Outlook

Re: **Trim** Enrolment Figures - **Trim** Educate Together National school



Marie Crinion <info@trimeducateetogether.com>
To: Chris Burke Young

☺ Reply ↶ Reply All → Forward 📧 ⋮
Mon 23/02/2026 10:54

Good morning Chris,
Yes that is our Roll number. Our Eircode is C15KA9P.
Our current enrolment is 177 students. That figure you have is from last year (24/25).
Our current enrolment capacity is approx. 23 extra students.
If you have any further queries don't hesitate to contact the school.
Kind Regards,
David.

Principal,
Trim Educate Together National School,
The Maudlins,
Trim,
Co. Meath,
C15KA9P

Appendix E - Letter of Support from Childcare Provider (Cookies Early Learning Centre)

COOKIES EARLY LEARNING CENTRE
DUNSHAUGHLIN – ATHBOY – CLANE – CELBRIDGE
087 118 2776 / MEGAN.COOKIESELG@GMAIL.COM



Mr. Aidan Hora,
Loughglynn Developments Limited,
Rathvale,
Athboy,
Co. Meath

5th June 2026

Re: Proposed Creche, Crowpark, Kildalkey Road, Trim, Co. Meath

Dear Aidan,

I refer to our recent discussions regarding your proposed new creche at Kildalkey Road, Trim.

Cookies Early Learning Centre currently operates childcare facilities in Athboy, Dunshaughlin, Celbridge and Clane. We are tenants of Loughglynn Developments in Castletown Manor in Athboy and will also be opening a new creche on their site in Grange Park, Dunshaughlin in late-2026. Loughglynn asked us to review their plans for the creche building within their proposed planning application at Kildalkey Road, Trim from an operational and viability perspective.

We confirm that we have reviewed the plans and our proposed suggestions have been incorporated into the final design. We are confident that the revised design is both commercially viable and compliant with Tulsa requirements. If planning is permitted, we are very interested in opening a childcare facility in this location.


I hope that the above covers everything but please let me know if you need anything further.

Yours sincerely,

Megan Cooke- Smith
Cookies Early Learning Centre

Appendix F – Correspondence Issued to Meath County Childcare Committee

RE: Review of Childcare/Preschool Demand Audit – Kildalkey Road Trim

 Sean Maguire
To: reception@mccc.ie

 Reply  Reply All  Forward  

Fri 12/06/2026 11:22

Good Morning,

I hope you are well.

I am just following up on my email below regarding the Childcare/Preschool Demand Audit for the proposed residential development at Kildalkey Road, Trim. I would be grateful if you could confirm receipt of the audit and advise if you have had an opportunity to review it. Any feedback or confirmation from Meath County Childcare Committee would be greatly appreciated.

Should you require any further information, please do not hesitate to contact me.

Regards,

Sean Maguire
Senior Planner
McGill Planning Ltd.
9 Pembroke Street Upper
Dublin 2
D02 KR83

Email: sean@mcgplanning.ie
Tel: 01 284 6464
Mobile: 083 484 7309
Website: www.mcgplanning.ie
Twitter: @McGillPlanning

Review of Childcare/Preschool Demand Audit – Kildalkey Road Trim

Sean Maguire
To: reception@mccc.ie
Cc: Brenda Butterly; Trevor Sadler

Reply Reply All Forward Fri 05/06/2026 10:44

You replied to this message on 12/06/2026 11:21.

Social Infrastructure Audit including Creche Assessment.pdf 2 MB Proposed Creche.pdf 3 MB

Private and Confidential

Good Morning,

I hope this email finds you well.

McGill Planning has prepared a Childcare/Preschool Demand Audit on behalf of our client, Loughlynn Developments Limited, in relation to a proposed residential development at Kildalkey Road, Trim, County Meath.

The proposed development comprises:

127 houses and 56 apartments

The bedroom mix is as follows:

- 16 no. 1-bedroom units (8.7%)
- 40 no. 2-bedroom units (21.9%)
- 99 no. 3-bedroom units (54.1%)
- 28 no. 4-bedroom units (15.3%)

Total: 183 residential units

As part of the pre-planning consultation process with Meath County Council, we have been requested to engage with Meath County Childcare Committee to assess the availability of existing childcare capacity within the area.

As part of our audit, we contacted seven local childcare providers and received responses from three. Of those respondents, two currently have available capacity, amounting to a total of nine childcare places.

Notwithstanding the existing provision, the proposed development incorporates a purpose-built childcare facility of approximately 394 sq.m, capable of accommodating circa 60 children, together with approximately 193 sq.m of associated outdoor play space. The proposed facility will meet and exceed the anticipated childcare demand generated by the development while also providing additional capacity for the wider community. We have enclosed details of the proposed crèche design for your consideration.

In addition, we have obtained a letter of support from Cookies ELC, an established childcare operator who is currently a tenant of the applicant in Athboy and will shortly commence operations in Dunshaughlin. Subject to the grant of planning permission, Cookies ELC has expressed a strong interest in operating the proposed childcare facility at this location.

We would be grateful if you could review the enclosed Childcare Demand Audit and confirm whether you are satisfied with its findings. This consultation has been undertaken in response to a request from Meath County Council as part of the pre-planning process.

Should you wish to discuss any aspect of the proposal, please do not hesitate to contact me.

Regards,


Sean Maguire
Senior Planner
McGill Planning Ltd.
9 Pembroke Street Upper
Dublin 2
D02 KR83

Email: sean@mcgplanning.ie
Tel: 01 284 6464
Mobile: 083 484 7309
Website: www.mcgplanning.ie
Twitter: @McGillPlanning




Appendix G – Response received from Meath County Childcare Committee

Review of Childcare/Preschool Demand Audit – Kildalkey Road Trim

 Catherine Coogan <catherine@mccc.ie>
To: Sean Maguire



Fri 19/06/2026 12:14

 You replied to this message on 23/06/2026 09:21.
If there are problems with how this message is displayed, click here to view it in a web browser.

Dear Sean,

Please accept our apologies in the delay to our response, we were between receptionists which led to this getting overlooked.

Meath County Childcare would like to acknowledge the have that we have received the Social & Community Infrastructure Audit-including Creche on behalf of MCG Planning for Loughlynn Developments Ltd.

We are satisfied with the findings of this report and support the development of the creche facility with approximate capacity for circa.60 childcare places. Our local findings match the provision of places for both full time/part time places along with school aged childcare, the demand in that area shows shortages at present and we welcome this development. The associated large outdoor play space is a welcome addition and will have long term benefits for the children in that creche who will use it for numerous years.

Your potential client for the operation of this facility is well known to us through their current provision of quality early years care and education already within the county of Meath through it's various branches.

Kindest Regards

Catherine Coogan

Support and Development Officer
Meath County Childcare Committee
Mobile 087-2031227

Address: C15RX61 Website: <http://www.mccc.ie/>

National CCC website: www.gov.ie/Early Learning and Care Supports



An Roinn Leanaí, Michumais agus Comhionannais
Department of Children, Disability and Equality



 Please consider the environment before printing this email

***This email and any files transmitted with it are from Meath County Childcare Committee and are confidential, intended solely for the use of the individual or entity to whom they are addressed. If you have received this email in error please notify the system manager. Please note